

Serine/threonine-protein phosphatase 2A catalytic subunit beta isoform Polyclonal Antibody

Catalog No: #42191

Orders: order@signalwayantibody.comSupport: tech@signalwayantibody.com

Description

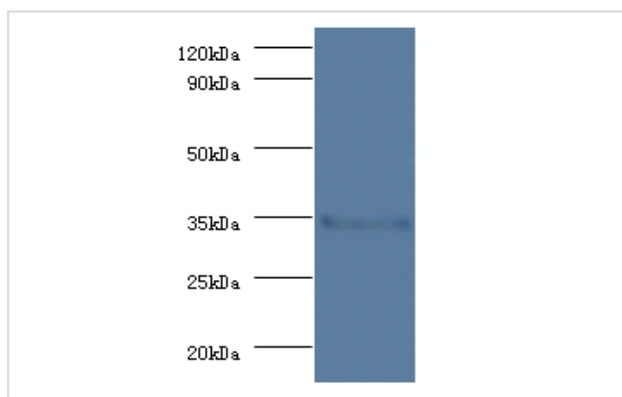
Product Name	Serine/threonine-protein phosphatase 2A catalytic subunit beta isoform Polyclonal Antibody
Host Species	Rabbit
Clonality	Polyclonal
Purification	Caprylic Acid Ammonium Sulfate Precipitation purified
Applications	WB IHC
Species Reactivity	Hu
Specificity	The antibody detects endogenous level of total Serine/threonine-protein phosphatase 2A catalytic subunit beta isoform polyclonal antibody.
Immunogen Type	protein
Immunogen Description	Recombinant human Serine/threonine-protein phosphatase 2A catalytic subunit beta isoform protein
Target Name	Serine/threonine-protein phosphatase 2A catalytic subunit be
Other Names	PP2A-beta
Accession No.	Swiss-Prot#: P62714
Uniprot	P62714
GeneID	5516;
Calculated MW	34kd
Formulation	Preservative: 0.03% Proclin 300 Constituents: 50% Glycerol, 0.01M PBS, PH 7.4
Storage	Store at -20°C

Application Details

Western blotting: □1:500 - 1:1000

Immunohistochemistry: 1:20 - 1:200

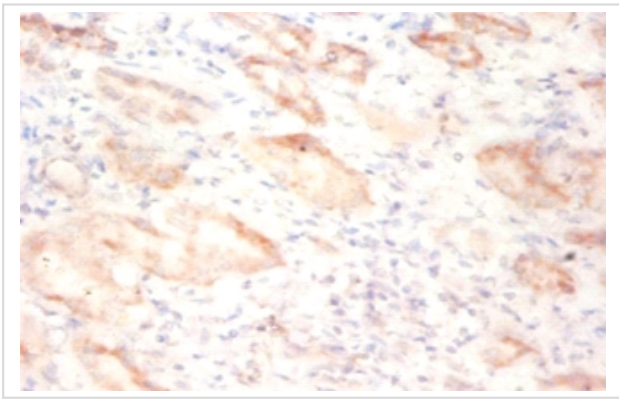
Images



All lanes: Serine/threonine-protein phosphatase 2A catalytic subunit beta isoform Antibody at 2ug/ml + EC109 whole cell lysate at 20 ug

Secondary
Goat polyclonal to Rabbit IgG at 1/15000 dilution

Predicted band size : 34 kDa
Observed band size : 34 kDa



Immunohistochemical analysis of paraffin-embedded human kidney using #42191 at dilution of 1:50.

Background

PP2A can modulate the activity of phosphorylase B kinase casein kinase 2, mitogen-stimulated S6 kinase, and MAP-2 kinase.

References

[1]"The nucleotide sequence of the cDNA encoding the human lung protein phosphatase 2A beta catalytic subunit." Hemmings B.A., Wernet W., Mayer R., Maurer F., Hofsteenge J., Stone S.R. Nucleic Acids Res. 16:11366-11366(1988) [2]"Cloning of human full o

Note: This product is for in vitro research use only