

Dipeptidyl-peptidase 3 antibody

Catalog No: #22743

Orders: order@signalwayantibody.com

Support: tech@signalwayantibody.com

Description

Product Name	Dipeptidyl-peptidase 3 antibody
Host Species	Rabbit
Clonality	Polyclonal
Purification	Purified by antigen-affinity chromatography.
Applications	WB IHC IF
Species Reactivity	Hu
Immunogen Type	Recombinant protein
Immunogen Description	Recombinant protein fragment contain a sequence corresponding to a region within amino acids 138 and 435 of Dipeptidyl-peptidase 3
Target Name	Dipeptidyl-peptidase 3
Accession No.	Swiss-Prot:Q9NY33Gene ID:10072
Uniprot	Q9NY33
GeneID	10072;
Concentration	0.5mg/ml
Formulation	Supplied in 0.1M Tris-buffered saline with 10% Glycerol (pH7.0). 0.01% Thimerosal was added as a preservative.
Storage	Store at -20°C for long term preservation (recommended). Store at 4°C for short term use.

Application Details

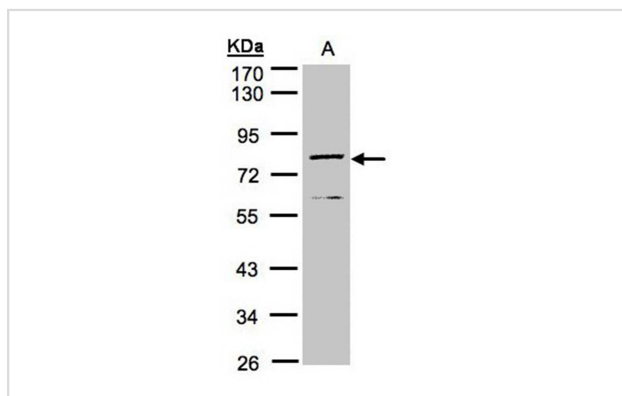
Predicted MW: 83kd

Western blotting: 1:500-1:3000

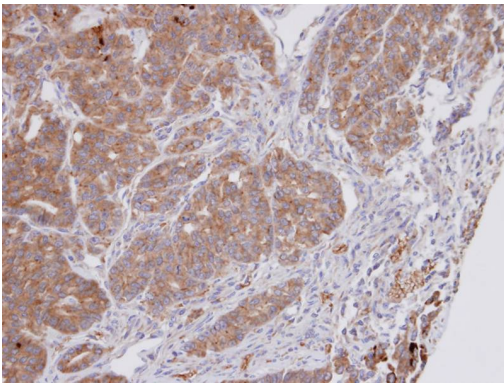
Immunohistochemistry: 1:100-1:250

Immunofluorescence: 1:100-1:200

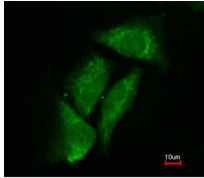
Images



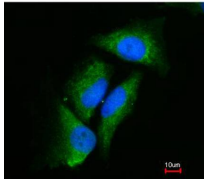
Sample(30 ug of whole cell lysate)
A: MOLT4
10% SDS PAGE
Primary antibody diluted at 1: 1000



Immunohistochemical analysis of paraffin-embedded AGS xenograft, using DPP3 antibody at 1: 100 dilution.



Merged with DNA probe



Immunofluorescence analysis of paraformaldehyde-fixed HeLa, using Dipeptidyl-peptidase 3 antibody at 1: 200 dilution.

Background

This gene encodes a protein that is a member of the S9B family in clan SC of the serine proteases. This cytoplasmic protein binds a single zinc ion with its zinc-binding motif (HELLGH) and has post-proline dipeptidyl aminopeptidase activity, cleaving Xaa-Pro dipeptides from the N-termini of proteins. Increased activity of this protein is associated with endometrial and ovarian cancers. Alternate transcriptional splice variants have been characterized. [provided by RefSeq]

Note: This product is for in vitro research use only