

Rb(Phospho-Ser780) Antibody

Catalog No: #11132



Package Size: #11132-1 50ul #11132-2 100ul

Orders: order@signalwayantibody.comSupport: tech@signalwayantibody.com

Description

Product Name	Rb(Phospho-Ser780) Antibody
Host Species	Rabbit
Clonality	Polyclonal
Purification	Antibodies were produced by immunizing rabbits with synthetic phosphopeptide and KLH conjugates. Antibodies were purified by affinity-chromatography using epitope-specific phosphopeptide. Non-phospho specific antibodies were removed by chromatography using non-phosphopeptide.
Applications	WB IHC IF
Species Reactivity	Hu Ms Rt
Specificity	The antibody detects endogenous level of Rb only when phosphorylated at serine 780.
Immunogen Type	Peptide-KLH
Immunogen Description	Peptide sequence around phosphorylation site of serine 780 (T-L-S(p)-P-I) derived from Human Rb.
Target Name	Rb
Modification	Phospho
Other Names	P105-RB; PP105; PP110; RB-1; RB1
Accession No.	Swiss-Prot: P06400NCBI Protein: NP_000312.2
Uniprot	P06400
GeneID	5925;
Concentration	1.0mg/ml
Formulation	Supplied at 1.0mg/mL in phosphate buffered saline (without Mg ²⁺ and Ca ²⁺), pH 7.4, 150mM NaCl, 0.02% sodium azide and 50% glycerol.
Storage	Store at -20°C for long term preservation (recommended). Store at 4°C for short term use.

Application Details

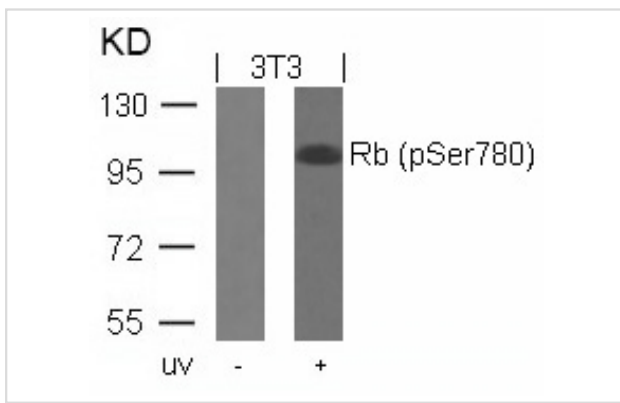
Predicted MW: 110kd

Western blotting: 1:500~1:1000

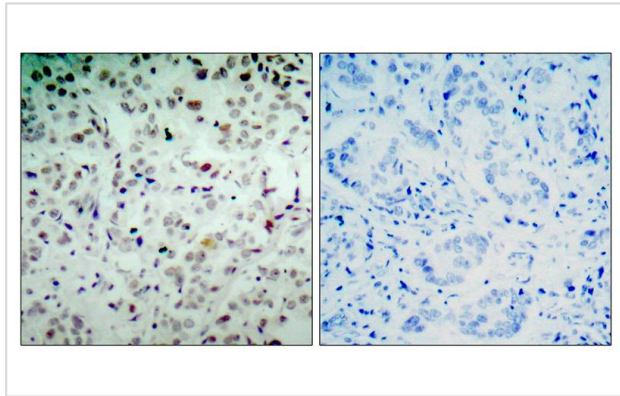
Immunohistochemistry: 1:50~1:100

Immunofluorescence: 1:100~1:200

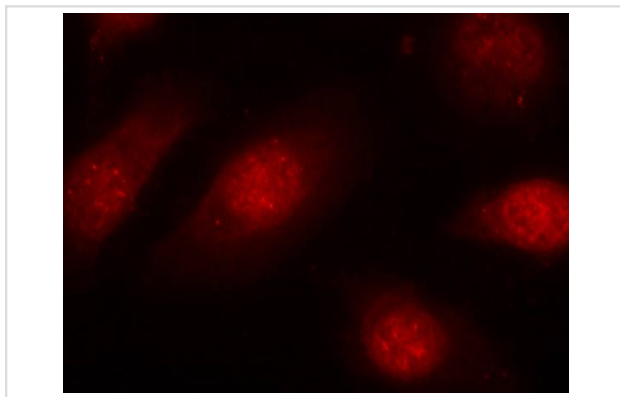
Images



Western blot analysis of extracts from 3T3 cells untreated or treated with UV using Rb(Phospho-Ser780) Antibody #11132.



Immunohistochemical analysis of paraffin-embedded human breast carcinoma tissue using Rb(Phospho-Ser780) Antibody #11132(left) or the same antibody preincubated with blocking peptide(right).



Immunofluorescence staining of methanol-fixed HeLa cells using Rb(Phospho-Ser780) Antibody #11132.

Background

Key regulator of entry into cell division that acts as a tumor suppressor. Acts as a transcription repressor of E2F1 target genes. The underphosphorylated, active form of RB1 interacts with E2F1 and represses its transcription activity, leading to cell cycle arrest. Directly involved in heterochromatin formation by maintaining overall chromatin structure and, in particular, that of constitutive heterochromatin by stabilizing histone methylation. Recruits and targets histone methyltransferases SUV39H1, SUV420H1 and SUV420H2, leading to epigenetic transcriptional repression. Controls histone H4 'Lys-20' trimethylation. Inhibits the intrinsic kinase activity of TAF1. In case of viral infections, interactions with SV40 large T antigen, HPV E7 protein or adenovirus E1A protein induce the disassembly of RB1-E2F1 complex thereby disrupting RB1's activity.

Roesch A, et al.(2005) *Mod Pathol*. 18(4): 565-572.

Huang H, et al.(2004)*Oncogene*. 23(12): 2161-2176.

Kitagawa M, et al.(1996)*EMBO J*. 15(24): 7060-7069.

Note: This product is for in vitro research use only