

Isocitrate dehydrogenase [NADP] cytoplasmic Polyclonal Antibody

Catalog No: #42216

Orders: order@signalwayantibody.comSupport: tech@signalwayantibody.com

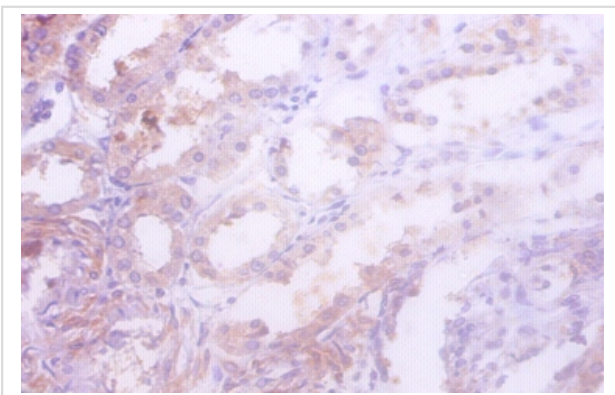
Description

Product Name	Isocitrate dehydrogenase [NADP] cytoplasmic Polyclonal Antibody
Host Species	Rabbit
Clonality	Polyclonal
Purification	Caprylic Acid Ammonium Sulfate Precipitation purified
Applications	IHC
Species Reactivity	Ms
Specificity	The antibody detects endogenous level of total Isocitrate dehydrogenase [NADP] cytoplasmic polyclonal antibody.
Immunogen Type	protein
Immunogen Description	Recombinant mouse Isocitrate dehydrogenase [NADP] cytoplasmic protein
Target Name	Isocitrate dehydrogenase [NADP] cytoplasmic
Other Names	Cytosolic NADP-isocitrate dehydrogenase IDP NADP(+)-specific ICDH Oxalosuccinate decarboxylase Idh1
Accession No.	Swiss-Prot#: O75874
Uniprot	O75874
GeneID	3417;
Formulation	Preservative: 0.03% Proclin 300 Constituents: 50% Glycerol, 0.01M PBS, PH 7.4
Storage	Store at -20°C

Application Details

Immunohistochemistry: 1:20 - 1:200

Images



Immunohistochemical analysis of paraffin-embedded human kidney using #42216 at dilution of 1:50.

References

[1] Cytosolic isocitrate dehydrogenase in humans, mice, and voles and phylogenetic analysis of the enzyme family. Nekrutenko A., Hillis D.M., Patton J.C., Bradley R.D., Baker R.J. Mol. Biol. Evol. 15:1674-1684(1998) [2] The transcriptional landscape of the

Note: This product is for in vitro research use only