

## Interferon alpha-21 Polyclonal Antibody

Catalog No: #42218

Orders: order@signalwayantibody.com

Support: tech@signalwayantibody.com

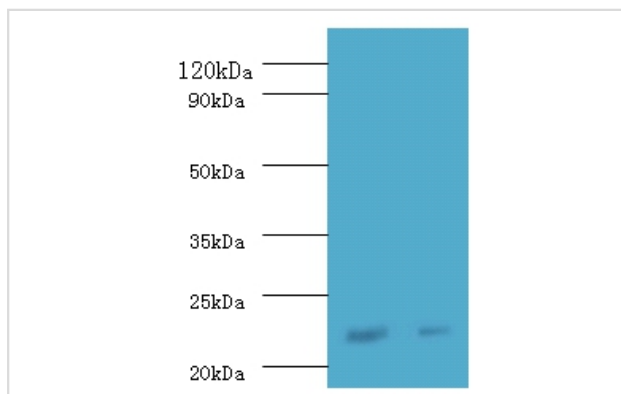
## Description

Product Name	Interferon alpha-21 Polyclonal Antibody
Host Species	Rabbit
Clonality	Polyclonal
Purification	Caprylic Acid Ammonium Sulfate Precipitation purified
Applications	WB
Species Reactivity	Hu
Specificity	The antibody detects endogenous level of total Interferon alpha-21 polyclonal antibody.
Immunogen Type	protein
Immunogen Description	Recombinant human Interferon alpha-21 protein
Target Name	Interferon alpha-21
Other Names	Interferon alpha-F IFNA21
Accession No.	Swiss-Prot#: P01568
Uniprot	P01568
GeneID	3452;
Calculated MW	22kd
Formulation	Preservative: 0.03% Proclin 300 Constituents: 50% Glycerol, 0.01M PBS, PH 7.4
Storage	Store at -20°C

## Application Details

Western blotting:  1:500 - 1:1000

## Images



All lanes: Interferon alpha-21 antibody at 2ug/ml  
 Lane 1: NIH3T3 whole cell lysate  
 Lane 2: HepG2 whole cell lysate  
 secondary  
 Goat polyclonal to rabbit at 1/10000 dilution  
 predicted band size :22kDa  
 observed band size :22kDa

## Background

Produced by macrophages, IFN-alpha have antiviral activities. Interferon stimulates the production of two enzymes: a protein kinase and an oligoadenylate synthetase.

## References

---

[1]The structure of eight distinct cloned human leukocyte interferon cDNAs.Goeddel D.V., Leung D.W., Dull T.J., Gross M., Lawn R.M., McCandliss R., Seeburg P.H., Ullrich A., Yelverton E., Gray P.W.Nature 290:20-26(1981) [2]A new type of leukocytic inte

---

Note: This product is for in vitro research use only