

Spermidine synthase Polyclonal Antibody

Catalog No: #42220

Orders: order@signalwayantibody.com

Support: tech@signalwayantibody.com

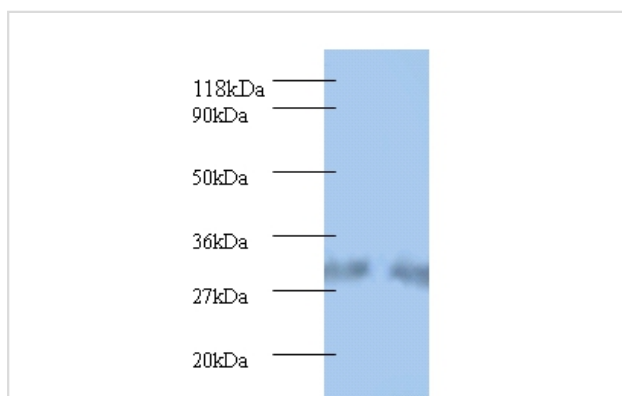
Description

Product Name	Spermidine synthase Polyclonal Antibody
Host Species	Rabbit
Clonality	Polyclonal
Purification	Caprylic Acid Ammonium Sulfate Precipitation purified
Applications	WB
Species Reactivity	Hu
Specificity	The antibody detects endogenous level of total Spermidine synthase polyclonal antibody.
Immunogen Type	protein
Immunogen Description	Recombinant human Spermidine synthase protein
Target Name	Spermidine synthase
Other Names	Putrescine aminopropyltransferase
Accession No.	Swiss-Prot#: P19623
Uniprot	P19623
GeneID	6723;
Calculated MW	33.2kd
Formulation	Preservative: 0.03% Proclin 300 Constituents: 50% Glycerol, 0.01M PBS, PH 7.4
Storage	Store at -20°C

Application Details

Western blotting: □1:500 - 1:1000

Images



All lanes : spermidine synthase antibody at 2ug/ml
 Lane 1 : EC109 whole cell lysate
 Lane 2 : 293T whole cell lysate
 Secondary Goat polyclonal to Rabbit IgG at 1/15000 dilution
 Predicted band size : 33.2kDa
 Observed band size: 33.2kDa

Background

Catalyzes the production of spermidine from putrescine and decarboxylated S-adenosylmethionine (dcSAM). Has a strong preference for putrescine as substrate, and has very low activity towards 1,3-diaminopropane. Has extremely low activity towards spermidine.

References

[1]"Molecular cloning of a cDNA encoding human spermine synthase." Korhonen V.-P., Halmekytoe M., Kauppinen L., Myoehaenen S., Wahlfors J., Keinaenen T., Hyvoenen T., Alhonen L., Eloranta T., Jaenne J. DNA Cell Biol. 14:841-847(1995) [2]"Sequence analy

Note: This product is for in vitro research use only