

Indolethylamine N-methyltransferase Polyclonal Antibody

Catalog No: #42224

Orders: order@signalwayantibody.comSupport: tech@signalwayantibody.com

Description

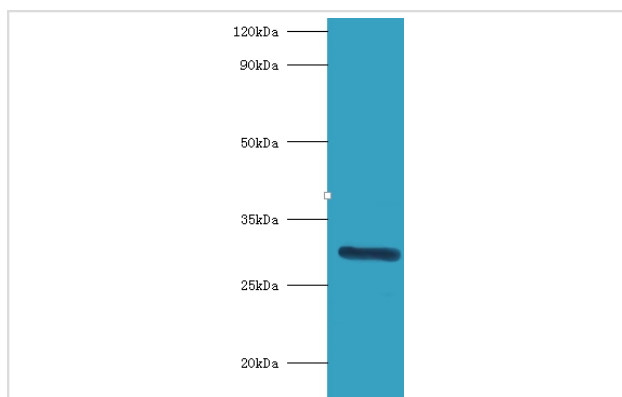
Product Name	Indolethylamine N-methyltransferase Polyclonal Antibody
Host Species	Rabbit
Clonality	Polyclonal
Purification	Caprylic Acid Ammonium Sulfate Precipitation purified
Applications	WB
Species Reactivity	Hu
Specificity	The antibody detects endogenous level of total Indolethylamine N-methyltransferase polyclonal antibody.
Immunogen Type	protein
Immunogen Description	Recombinant human Indolethylamine N-methyltransferase protein
Target Name	Indolethylamine N-methyltransferase
Other Names	Aromatic alkylamine N-methyltransferase INMT
Accession No.	Swiss-Prot#: O95050
Uniprot	O95050
GenID	11185;
Calculated MW	29kd
Formulation	Preservative: 0.03% Proclin 300 Constituents: 50% Glycerol, 0.01M PBS, PH 7.4
Storage	Store at -20°C

Application Details

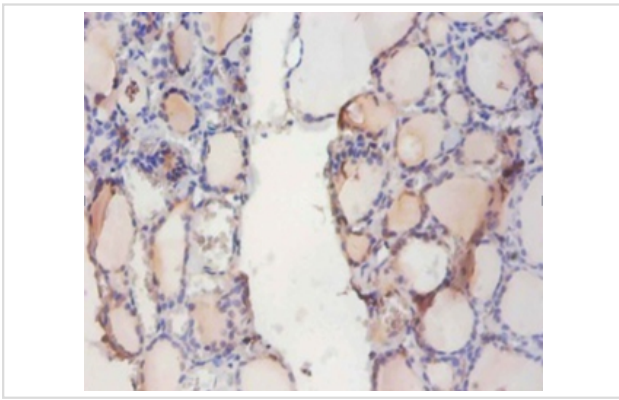
Western blotting: □ 1:500 - 1:1000

Immunohistochemistry: 1:20 - 1:200

Images



All lanes: Indolethylamine N-methyltransferase antibody at 2ug/ml+mouse lung tissue
 Secondary
 Goat polyclonal to Rabbit IgG at 1/15000 dilution
 Predicted band size:29kda
 Observed band size:29kda



Immunohistochemical analysis of paraffin-embedded human thyroid using #42224 at dilution of 1:50.

Background

O95050

References

[1]Human indolethylamine N-methyltransferase: cDNA cloning and expression, gene cloning, and chromosomal localization. Thompson M.A., Moon E., Kim U.-J., Xu J., Siciliano M.J., Weinshilboum R.M. Genomics 61:285-297(1999) [2]Complete sequencing and charact

Note: This product is for in vitro research use only