

Potassium voltage-gated channel subfamily D member 1 Polyclonal Antibody

Catalog No: #42227

Orders: order@signalwayantibody.comSupport: tech@signalwayantibody.com

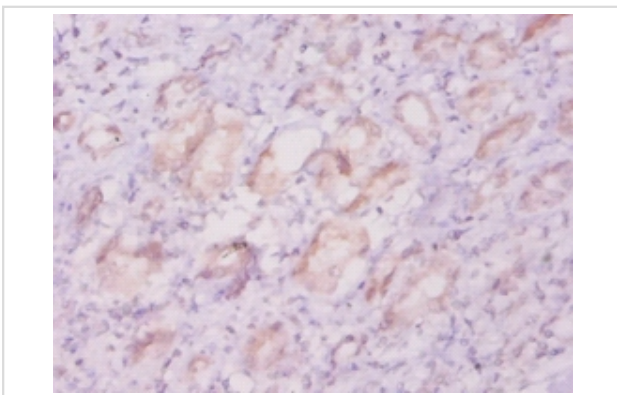
Description

Product Name	Potassium voltage-gated channel subfamily D member 1 Polyclonal Antibody
Host Species	Rabbit
Clonality	Polyclonal
Purification	Caprylic Acid Ammonium Sulfate Precipitation purified
Applications	IHC
Species Reactivity	Hu
Specificity	The antibody detects endogenous level of total Potassium voltage-gated channel subfamily D member 1 polyclonal antibody.
Immunogen Type	protein
Immunogen Description	Recombinant human Potassium voltage-gated channel subfamily D member 1 protein
Target Name	Potassium voltage-gated channel subfamily D member 1
Other Names	Voltage-gated potassium channel subunit Kv4.1, KCND1
Accession No.	Swiss-Prot#: Q9NSA2
Uniprot	Q9NSA2
GeneID	3750;
Formulation	Preservative: 0.03% Proclin 300 Constituents: 50% Glycerol, 0.01M PBS, PH 7.4
Storage	Store at -20°C

Application Details

Immunohistochemistry: 1:20 - 1:200

Images



Immunohistochemical analysis of paraffin-embedded human kidney using #42227 at dilution of 1:20.

Background

Pore-forming (alpha) subunit of voltage-gated rapidly inactivating A-type potassium channels. May contribute to I(To) current in heart and I(Sa) current in neurons. Channel properties are modulated by interactions with other alpha subunits and with regulatory subunits.

References

[1]"Gene structures and expression profiles of three human KCND (Kv4) potassium channels mediating A-type currents I(TO) and I(SA)."Isbrandt D., Leicher T., Waldschuetz R., Zhu X.-R., Luhmann U., Michel U., Sauter K., Pongs O.Genomics 64:144-1

Note: This product is for in vitro research use only