

Plasma kallikrein Polyclonal Antibody

Catalog No: #42232

Orders: order@signalwayantibody.com

Support: tech@signalwayantibody.com

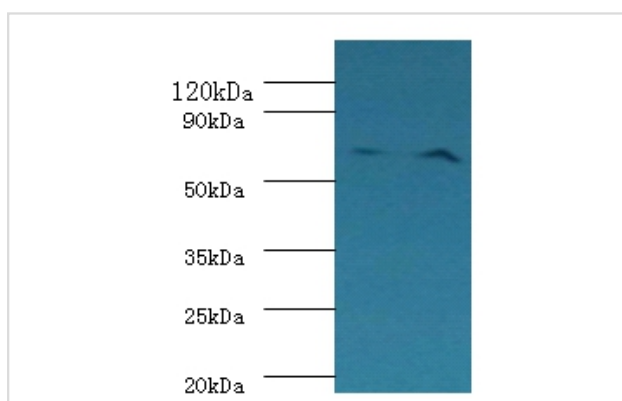
Description

Product Name	Plasma kallikrein Polyclonal Antibody
Host Species	Rabbit
Clonality	Polyclonal
Purification	Caprylic Acid Ammonium Sulfate Precipitation purified
Applications	WB
Species Reactivity	Hu Rt
Specificity	The antibody detects endogenous level of total Plasma kallikrein polyclonal antibody.
Immunogen Type	protein
Immunogen Description	Recombinant Rat Plasma kallikrein protein
Target Name	Plasma kallikrein
Other Names	Fletcher factor Kininogenin Plasma prekallikrein K1kb1 K1k3, Pk
Accession No.	Swiss-Prot#: P14272
Uniprot	P14272
Calculated MW	71kd
Formulation	Preservative: 0.03% Proclin 300 Constituents: 50% Glycerol, 0.01M PBS, PH 7.4
Storage	Store at -20°C

Application Details

Western blotting: □ 1:500 - 1:1000

Images



All lanes: Plasma kallikrein antibody at 2ug/ml
 Lane 1: Hela whole cell lysate
 Lane 2: rat brain tissue
 secondary
 Goat polyclonal to rabbit at 1/10000 dilution
 predicted band size :71kDa
 observed band size :71kDa

Background

The enzyme cleaves Lys-Arg and Arg-Ser bonds. It activates, in a reciprocal reaction, factor XII after its binding to a negatively charged surface. It also releases bradykinin from HMW kininogen and may also play a role in the renin-angiotensin system by converting prorenin into renin.

References

[1] Gene structure and chromosomal localization of plasma kallikrein. Beaubien G., Rosinski-Chupin I., Mattei M.-G., Mbikay M., Chretien M., Seidah N.G. *Biochemistry* 30:1628-1635(1991) [2] The cDNA structure of rat plasma kallikrein. Seidah N.G., Ladenheim

Note: This product is for in vitro research use only