

## CTDSP2 antibody

Catalog No: #22750

Orders: [order@signalwayantibody.com](mailto:order@signalwayantibody.com)Support: [tech@signalwayantibody.com](mailto:tech@signalwayantibody.com)

## Description

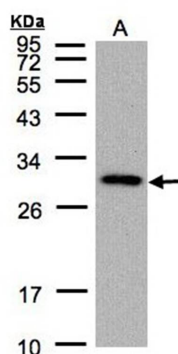
Product Name	CTDSP2 antibody
Host Species	Rabbit
Clonality	Polyclonal
Purification	Purified by antigen-affinity chromatography.
Applications	WB
Species Reactivity	Hu
Immunogen Type	Recombinant protein
Immunogen Description	Recombinant protein fragment contain a sequence corresponding to a region within amino acids 26 and 256 of Human CTDSP2
Target Name	CTDSP2
Accession No.	Swiss-Prot:O14595Gene ID:10106
Uniprot	O14595
GeneID	10106;
Concentration	1mg/ml
Formulation	Supplied in 0.1M Tris-buffered saline with 10% Glycerol (pH7.0). 0.01% Thimerosal was added as a preservative.
Storage	Store at -20°C for long term preservation (recommended). Store at 4°C for short term use.

## Application Details

Predicted MW: 31kd

Western blotting: 1:500-1:3000

## Images



Sample (30 ug of whole cell lysate)  
A: 293T  
12% SDS PAGE  
CTDSP2 antibody diluted at 1: 1000

Note: This product is for in vitro research use only