

Nuclear pore membrane glycoprotein 210 Polyclonal Antibody

Catalog No: #42276

Orders: order@signalwayantibody.comSupport: tech@signalwayantibody.com

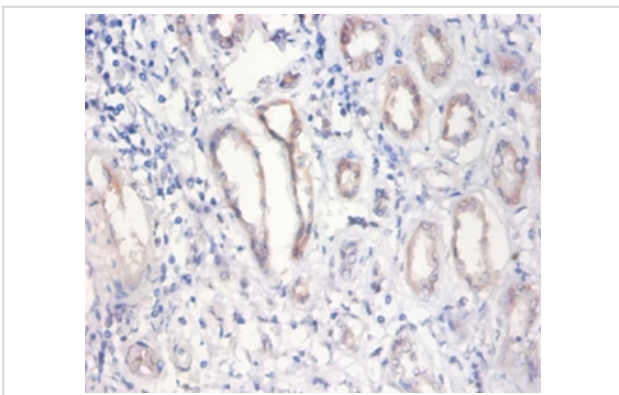
Description

Product Name	Nuclear pore membrane glycoprotein 210 Polyclonal Antibody
Host Species	Rabbit
Clonality	Polyclonal
Purification	Caprylic Acid Ammonium Sulfate Precipitation purified
Applications	IHC
Species Reactivity	Hu
Specificity	The antibody detects endogenous level of total Nuclear pore membrane glycoprotein 210 polyclonal antibody.
Immunogen Type	protein
Immunogen Description	Recombinant human Nuclear pore membrane glycoprotein 210 protein
Target Name	Nuclear pore membrane glycoprotein 210
Other Names	Nuclear envelope pore membrane protein POM 210, Nucleoporin Nup210, Pore membrane protein of 210 kDa, NUP210, KIAA0906
Accession No.	Swiss-Prot#: Q8TEM1
Uniprot	Q8TEM1
GeneID	23225;
Formulation	Preservative: 0.03% Proclin 300 Constituents: 50% Glycerol, 0.01M PBS, PH 7.4
Storage	Store at -20°C

Application Details

Immunohistochemistry: 1:20 - 1:200

Images



Immunohistochemical analysis of paraffin-embedded human kidney using #42276 at dilution of 1:100.

Background

Nucleoporin essential for nuclear pore assembly and fusion, nuclear pore spacing, as well as structural integrity.

References

[1] "The DNA sequence, annotation and analysis of human chromosome 3." Muzny D.M., Scherer S.E., Kaul R., Wang J., Yu J., Sudbrak R., Buhay C.J., Chen R., Cree A., Ding Y., Dugan-Rocha S., Gill R., Gunaratne P., Harris R.A., Hawes A.C., Hernand

Note: This product is for in vitro research use only