

## Casein kinase II subunit beta Polyclonal Antibody

Catalog No: #42281

Orders: [order@signalwayantibody.com](mailto:order@signalwayantibody.com)Support: [tech@signalwayantibody.com](mailto:tech@signalwayantibody.com)

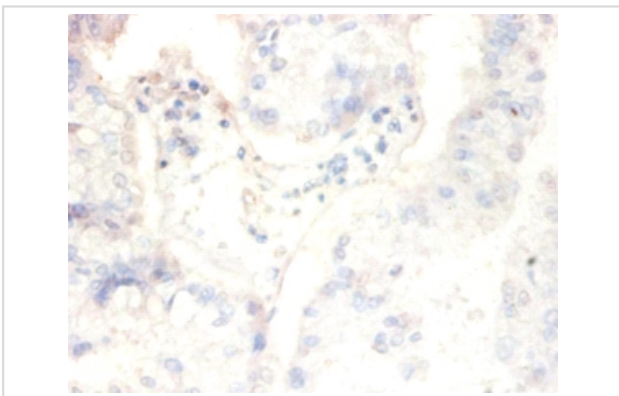
## Description

Product Name	Casein kinase II subunit beta Polyclonal Antibody
Host Species	Rabbit
Clonality	Polyclonal
Purification	Caprylic Acid Ammonium Sulfate Precipitation purified
Applications	IHC
Species Reactivity	Hu
Specificity	The antibody detects endogenous level of total Casein kinase II subunit beta polyclonal antibody.
Immunogen Type	protein
Immunogen Description	Recombinant human Casein kinase II subunit beta protein
Target Name	Casein kinase II subunit beta
Other Names	CSNK2B
Accession No.	Swiss-Prot#: P67870
Uniprot	P67870
GeneID	1460;
Formulation	Preservative: 0.03% Proclin 300 Constituents: 50% Glycerol, 0.01M PBS, PH 7.4
Storage	Store at -20°C

## Application Details

Immunohistochemistry: 1:20 - 1:200

## Images



Immunohistochemical analysis of paraffin-embedded human ovarian cancer using #42281 at dilution of 1:50.

## Background

Participates in Wnt signaling. Plays a complex role in regulating the basal catalytic activity of the alpha subunit.

## References

---

[1]"Human phosphatase/casein kinase type II. Molecular cloning and sequencing of full-length cDNA encoding subunit beta." Jakobi R., Voss H., Pyerin W. Eur. J. Biochem. 183:227-233(1989) [2]"Expression of the cDNA for the beta subunit of human casein kin

---

Note: This product is for in vitro research use only