

## Alpha-endosulfine Polyclonal Antibody

Catalog No: #42284

Orders: [order@signalwayantibody.com](mailto:order@signalwayantibody.com)Support: [tech@signalwayantibody.com](mailto:tech@signalwayantibody.com)

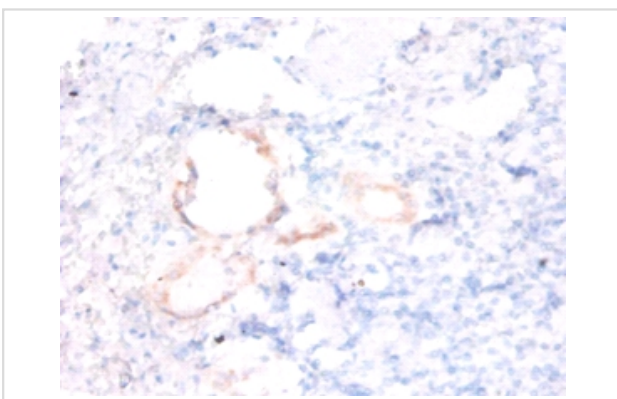
## Description

Product Name	Alpha-endosulfine Polyclonal Antibody
Host Species	Rabbit
Clonality	Polyclonal
Purification	Caprylic Acid Ammonium Sulfate Precipitation purified
Applications	IHC
Species Reactivity	Hu
Specificity	The antibody detects endogenous level of total Alpha-endosulfine polyclonal antibody.
Immunogen Type	protein
Immunogen Description	Recombinant human Alpha-endosulfine protein
Target Name	Alpha-endosulfine
Other Names	ARPP-19e
Accession No.	Swiss-Prot#: O43768
Uniprot	O43768
GeneID	2029;
Formulation	Preservative: 0.03% Proclin 300 Constituents: 50% Glycerol, 0.01M PBS, PH 7.4
Storage	Store at -20°C

## Application Details

Immunohistochemistry: 1:20 - 1:200

## Images



Immunohistochemical analysis of paraffin-embedded human kidney using #42284 at dilution of 1:50.

## Background

Protein phosphatase inhibitor that specifically inhibits protein phosphatase 2A (PP2A) during mitosis. When phosphorylated at Ser-67 during mitosis, specifically interacts with PPP2R2D (PR55-delta) and inhibits its activity, leading to inactivation of PP2A, an essential condition to keep cyclin-B1-CDK1 activity high during M phase. Also acts as a stimulator of insulin secretion by interacting with sulfonylurea receptor (ABCC8), thereby preventing sulfonylurea from binding to its receptor and reducing K(ATP) channel currents.

## References

---

[1] "Human alpha-endosulfine, a possible regulator of sulfonylurea-sensitive K(ATP) channel: molecular cloning, expression and biological properties."  
Heron L., Virsolvy A., Peyrollier K., Gribble F.M., Le Cam A., Ashcroft F.M., Bataille D. Proc. Natl. Ac

---

Note: This product is for in vitro research use only