

# Polymeric immunoglobulin receptor Polyclonal Antibody

Catalog No: #42292

Orders: [order@signalwayantibody.com](mailto:order@signalwayantibody.com)Support: [tech@signalwayantibody.com](mailto:tech@signalwayantibody.com)

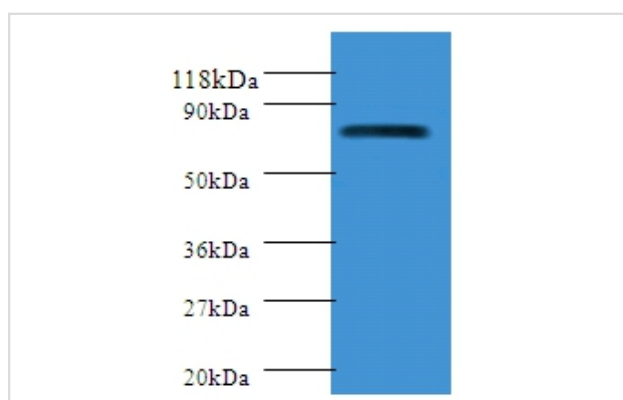
## Description

Product Name	Polymeric immunoglobulin receptor Polyclonal Antibody
Host Species	Rabbit
Clonality	Polyclonal
Purification	Caprylic Acid Ammonium Sulfate Precipitation purified
Applications	WB
Species Reactivity	B
Specificity	The antibody detects endogenous level of total Polymeric immunoglobulin receptor polyclonal antibody.
Immunogen Type	protein
Immunogen Description	Recombinant Bovine Polymeric immunoglobulin receptor protein
Target Name	Polymeric immunoglobulin receptor
Other Names	PIGR
Accession No.	Swiss-Prot#: P81265
Uniprot	P81265
GeneID	281401;
Calculated MW	82kd
Formulation	Preservative: 0.03% Proclin 300 Constituents: 50% Glycerol, 0.01M PBS, PH 7.4
Storage	Store at -20°C

## Application Details

Western blotting: □ 1:500 - 1:1000

## Images



All lanes: Polymeric immunoglobulin receptor antibody at 2ug/ml+HL-60 whole cell lysate  
Secondary  
Goat polyclonal to Rabbit IgG at 1/10000 dilution  
Predicted band size:82kDa  
Observed band size:82kDa

## Background

This receptor binds polymeric IgA and IgM at the basolateral surface of epithelial cells. The complex is then transported across the cell to be secreted at the apical surface. During this process a cleavage occurs that separates the extracellular (known as the secretory component) from the

transmembrane segment.

## References

---

[1]Cloning and characterization of two forms of bovine polymeric immunoglobulin receptor cDNA.Kulseth M.A., Krajci P., Myklebost O., Rogne S. DNA Cell Biol. 14:251-256(1995) [2]Cloning and characterization of the bovine polymeric immunoglobulin recept

---

Note: This product is for in vitro research use only