

## 60S ribosomal protein L36a-like Polyclonal Antibody

Catalog No: #42293

Orders: order@signalwayantibody.com

Support: tech@signalwayantibody.com

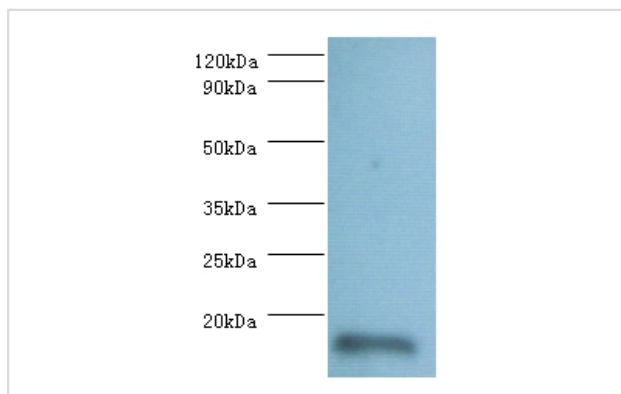
## Description

Product Name	60S ribosomal protein L36a-like Polyclonal Antibody
Host Species	Rabbit
Clonality	Polyclonal
Purification	Caprylic Acid Ammonium Sulfate Precipitation purified
Applications	WB
Species Reactivity	Hu
Specificity	The antibody detects endogenous level of total 60S ribosomal protein L36a-like polyclonal antibody.
Immunogen Type	protein
Immunogen Description	Recombinant human 60S ribosomal protein L36a-like protein
Target Name	60S ribosomal protein L36a-like
Other Names	RPL36AL
Accession No.	Swiss-Prot#: Q969Q0
Uniprot	Q969Q0
GeneID	6166;
Calculated MW	12kd
Formulation	Preservative: 0.03% Proclin 300 Constituents: 50% Glycerol, 0.01M PBS, PH 7.4
Storage	Store at -20°C

## Application Details

Western blotting: □1:500 - 1:1000

## Images



All Lane:60S ribosomal protein L36a-like Antibody at 2ug/ml +  
293T whole cell lysate at 20 ug

Secondary  
Goat polyclonal to Rabbit IgG at 1/15000 dilution

Predicted band size : 12kDa  
Observed band size :12kDa

## Background

Cytoplasmic ribosomes, organelles that catalyze protein synthesis, consist of a small 40S subunit and a large 60S subunit. Together these subunits are composed of 4 RNA species and approximately 80 structurally distinct proteins. RPL36A is a ribosomal protein that is a component of the 60S subunit. It shares sequence similarity with yeast ribosomal protein L44 and belongs to the L44E (L36AE) family of ribosomal proteins. Although this gene has been referred to as ribosomal protein L44 (RPL44), its official name is ribosomal protein L36a (RPL36A). RPL36A and the human gene

officially named ribosomal protein L36a-like (RPL36AL) encode nearly identical proteins; however, they are distinct genes. As is typical for genes encoding ribosomal proteins, there are multiple processed pseudogenes of this gene dispersed through the genome.

## References

---

[1]"Characterisation of an mRNA encoding a human ribosomal protein homologous to the yeast L44 ribosomal protein." Davies M.S., Henney A., Ward W.H.J., Craig R.K. *Gene* 45:183-191(1986) [2]"Functional second genes generated by retrotra

---

Note: This product is for in vitro research use only