

Succinate dehydrogenase [ubiquinone] flavoprotein subunit, mitochondrial Polyclonal Antibody

Catalog No: #42308

Orders: order@signalwayantibody.comSupport: tech@signalwayantibody.com

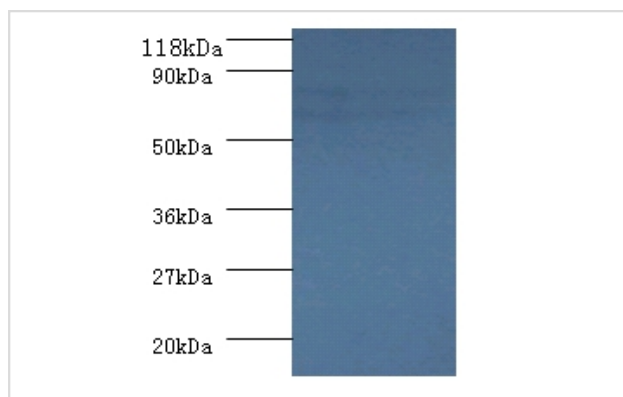
Description

Product Name	Succinate dehydrogenase [ubiquinone] flavoprotein subunit, mitochondrial Polyclonal Antibody
Host Species	Rabbit
Clonality	Polyclonal
Purification	Caprylic Acid Ammonium Sulfate Precipitation purified
Applications	WB
Species Reactivity	Hu
Specificity	The antibody detects endogenous level of total Succinate dehydrogenase [ubiquinone] flavoprotein subunit, mitochondrial polyclonal antibody.
Immunogen Type	protein
Immunogen Description	Recombinant human Succinate dehydrogenase [ubiquinone] flavoprotein subunit, mitochondrial protein
Target Name	Succinate dehydrogenase [ubiquinone] flavoprotein subunit, m
Other Names	SDH2, SDHF, SDHA, Flavoprotein subunit of complex II Fp
Accession No.	Swiss-Prot#: P31040
Uniprot	P31040
GeneID	6389;
Calculated MW	73kd
Formulation	Preservative: 0.03% Proclin 300 Constituents: 50% Glycerol, 0.01M PBS, PH 7.4
Storage	Store at -20°C

Application Details

Western blotting: □1:500 - 1:1000

Images



All lanes :Succinate dehydrogenase [ubiquinone] flavoprotein subunit, mitochondrial Antibody at 2ug/ml + 293T whole cell lysate at 20ug
 SecondaryGoat polyclonal to Rabbit IgG at 1/15000 dilution
 Predicted band size :73 kDa
 Observed band size : 73kDa

Background

Flavoprotein (FP) subunit of succinate dehydrogenase (SDH) that is involved in complex II of the mitochondrial electron transport chain and is

responsible for transferring electrons from succinate to ubiquinone (coenzyme Q).

References

[1]"Human complex II (succinate-ubiquinone oxidoreductase): cDNA cloning of the flavoprotein (Fp) subunit of liver mitochondria." Hirawake H., Wang H., Kuramochi T., Kojima S., Kita K. J. Biochem. 116:221-227(1994) [2]"The cDNA sequence

Note: This product is for in vitro research use only