

## Rhombotin-1 Polyclonal Antibody

Catalog No: #42315

Orders: order@signalwayantibody.com

Support: tech@signalwayantibody.com

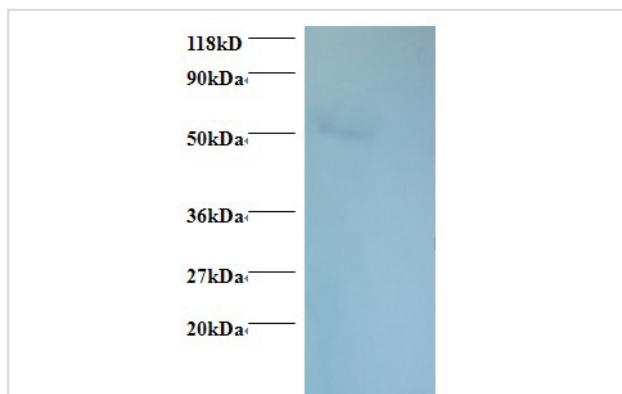
## Description

Product Name	Rhombotin-1 Polyclonal Antibody
Host Species	Rabbit
Clonality	Polyclonal
Purification	Caprylic Acid Ammonium Sulfate Precipitation purified
Applications	WB
Species Reactivity	Hu
Specificity	The antibody detects endogenous level of total Rhombotin-1 polyclonal antibody.
Immunogen Type	protein
Immunogen Description	Recombinant human Rhombotin-1 protein
Target Name	Rhombotin-1
Other Names	Cysteine-rich protein TTG-1 LIM domain only protein 1 Short name=LMO-1 T-cell translocation protein 1
Accession No.	Swiss-Prot#: P25800
Uniprot	P25800
GeneID	4004;
Calculated MW	17kd
Formulation	Preservative: 0.03% Proclin 300 Constituents: 50% Glycerol, 0.01M PBS, PH 7.4
Storage	Store at -20°C

## Application Details

Western blotting: □1:500 - 1:1000

## Images



All lanes : Rhombotin-1 antibody at 2ug/ml  
 Lane 1 : EC109 whole cell lysate  
 Lane 2 : 293T whole cell lysate  
 Secondary Goat polyclonal to Rabbit IgG at 1/15000 dilution  
 Predicted band size : 17 kDa  
 Observed band size: 50kDa

## Background

May be involved in gene regulation within neural lineage cells potentially by direct DNA binding or by binding to other transcription factors.

## References

---

[1] "The t(11;14)(p15;q11) in a T-cell acute lymphoblastic leukemia cell line activates multiple transcripts, including Ttg-1, a gene encoding a potential zinc finger protein." McGuire E.A., Hockett R.D., Pollock K.M., Bartholdi M.F., O'Brien S.J., Korsm

---

Note: This product is for in vitro research use only