

## SLC2A1 Polyclonal Antibody

Catalog No: #42323

Orders: order@signalwayantibody.com

Support: tech@signalwayantibody.com

## Description

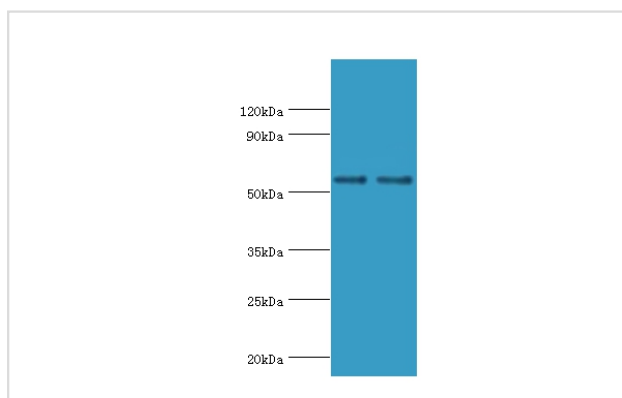
Product Name	SLC2A1 Polyclonal Antibody
Host Species	Rabbit
Clonality	Polyclonal
Purification	Antigen Affinity Purified
Applications	WB IHC
Species Reactivity	Hu
Specificity	The antibody detects endogenous level of total SLC2A1 polyclonal antibody.
Immunogen Type	protein
Immunogen Description	Recombinant human Solute carrier family 2, facilitated glucose transporter member 1 protein(210-310aa)
Target Name	SLC2A1
Other Names	Glucose transporter type 1, erythrocyte/brain, GLUT-1, HepG2 glucose transporter, SLC2A1, GLUT1
Accession No.	Swiss-Prot#: P11166
Uniprot	P11166
GeneID	6513;
Calculated MW	54kd
Concentration	1.0mg/mL
Formulation	PBS with 0.02% sodium azide, 50% glycerol, pH7.3.
Storage	Store at -20°C

## Application Details

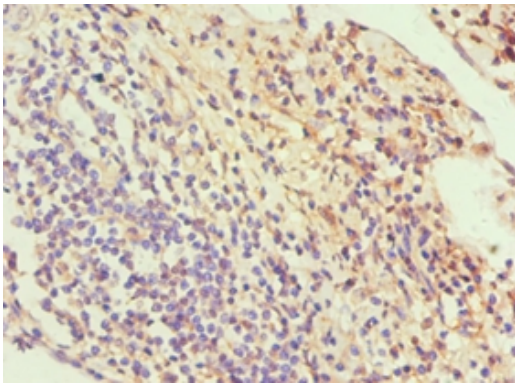
Western blotting: □ 1:500 - 1:5000

Immunohistochemistry: 1:20 - 1:200

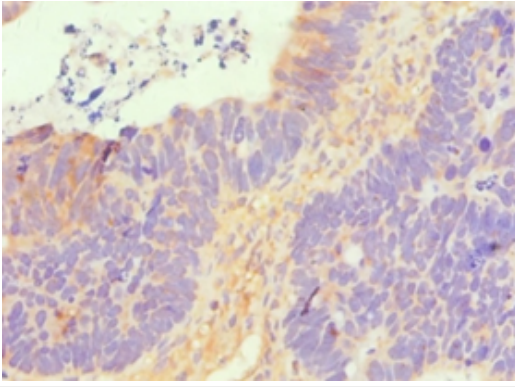
## Images



All lanes: Solute carrier family 2, facilitated glucose transporter member 1 antibody at 6ug/ml  
 Lane 1: NIH3T3 whole cell lysate  
 Lane 2: HeLa whole cell lysate secondary  
 Goat polyclonal to rabbit at 1/10000 dilution  
 predicted band size :54kDa  
 observed band size :54kDa



Immunohistochemical analysis of paraffin-embedded human cervical cancer using #42323 at dilution of 1:100.



Immunohistochemical analysis of paraffin-embedded human ovarian cancer using #42323 at dilution of 1:100.

## Background

Facilitative glucose transporter. This isoform may be responsible for constitutive or basal glucose uptake. Has a very broad substrate specificity; can transport a wide range of aldoses including both pentoses and hexoses.

## References

[1]Complete sequencing and characterization of 21,243 full-length human cDNAs."Ota T., Suzuki Y., Nishikawa T., Otsuki T., Sugiyama T., Irie R., Wakamatsu A., Hayashi K., Sato H., Nagai K., Kimura K., Makita H., Sekine M., Obayashi M., Nishi T., Shibahara T., Tanaka T., Ishii S. Sugano S.Nat. Genet. 36:40-45(2004). [2]Mural R.J., Istrail S., Sutton G.G., Florea L., Halpern A.L., Mobarry C.M., Lippert R., Walenz B., Shatkay H., Dew I., Miller J.R., Flanigan M.J., Edwards N.J., Bolanos R., Fasulo D., Halldorsson B.V., Hannenhalli S., Turner R. Venter J.C.Submitted (SEP-2005). [3]The status, quality, and expansion of the NIH full-length cDNA project: the Mammalian Gene Collection (MGC)."The MGC Project TeamGenome Res. 14:2121-2127(2004).

Note: This product is for in vitro research use only