

Solute carrier family 41 member 2 Polyclonal Antibody

Catalog No: #42324

Orders: order@signalwayantibody.comSupport: tech@signalwayantibody.com

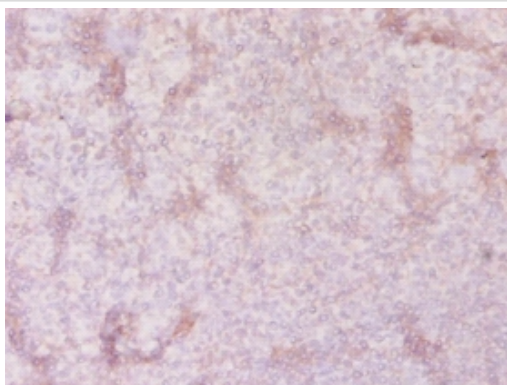
Description

Product Name	Solute carrier family 41 member 2 Polyclonal Antibody
Host Species	Rabbit
Clonality	Polyclonal
Purification	Caprylic Acid Ammonium Sulfate Precipitation purified
Applications	IHC
Species Reactivity	Hu
Specificity	The antibody detects endogenous level of total Solute carrier family 41 member 2 polyclonal antibody.
Immunogen Type	protein
Immunogen Description	Recombinant Human Solute carrier family 41 member 2 protein
Target Name	Solute carrier family 41 member 2
Other Names	SLC41A2
Accession No.	Swiss-Prot#: Q96JW4
Uniprot	Q96JW4
GeneID	84102;
Formulation	Preservative: 0.03% Proclin 300 Constituents: 50% Glycerol, 0.01M PBS, PH 7.4
Storage	Store at -20°C

Application Details

Immunohistochemistry: 1:20 - 1:200

Images



Immunohistochemical analysis of paraffin-embedded human tonsil using #42324 at dilution of 1:20.

Background

Acts as a plasma-membrane magnesium transporter.

References

[1] Complete sequencing and characterization of 21,243 full-length human cDNAs. Ota T., Suzuki Y., Nishikawa T., Otsuki T., Sugiyama T., Irie R., Wakamatsu A., Hayashi K., Sato H., Nagai K., Kimura K., Makita H., Sekine M., Obayashi M., Nishi T., Shibahara

Note: This product is for in vitro research use only