

# Sperm mitochondrial-associated cysteine-rich Polyclonal Antibody

Catalog No: #42328

Orders: [order@signalwayantibody.com](mailto:order@signalwayantibody.com)Support: [tech@signalwayantibody.com](mailto:tech@signalwayantibody.com)

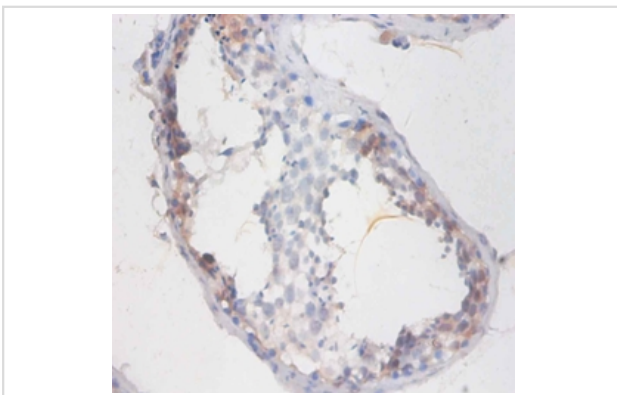
## Description

Product Name	Sperm mitochondrial-associated cysteine-rich Polyclonal Antibody
Host Species	Rabbit
Clonality	Polyclonal
Purification	Caprylic Acid Ammonium Sulfate Precipitation purified
Applications	IHC
Species Reactivity	Hu
Specificity	The antibody detects endogenous level of total Sperm mitochondrial-associated cysteine-rich polyclonal antibody.
Immunogen Type	protein
Immunogen Description	Recombinant human Sperm mitochondrial-associated cysteine-rich protein
Target Name	Sperm mitochondrial-associated cysteine-rich
Other Names	SMCP, MCS, MCSP
Accession No.	Swiss-Prot#: P49901
Uniprot	P49901
GeneID	4184;
Formulation	Preservative: 0.03% Proclin 300 Constituents: 50% Glycerol, 0.01M PBS, PH 7.4
Storage	Store at -20°C

## Application Details

Immunohistochemistry: 1:20 - 1:200

## Images



Immunohistochemical analysis of paraffin-embedded human testis using #42328 at dilution of 1:100.

## Background

Involved in sperm motility. Its absence is associated with genetic background dependent male infertility. Infertility may be due to reduced sperm motility in the female reproductive tract and inability to penetrate the oocyte zona pellucida

## References

---

[1] Isolation, expression, and chromosomal localization of the human mitochondrial capsule selenoprotein gene (MCSP). Aho H., Schwemmer M., Tessmann D., Murphy D., Mattei M.-G., Engel W., Adham I.M. Genomics 32:184-190(1996) [2] The status, quality, and e

---

Note: This product is for in vitro research use only