

Sorting nexin-20 Polyclonal Antibody

Catalog No: #42329

Orders: order@signalwayantibody.com

Support: tech@signalwayantibody.com

Description

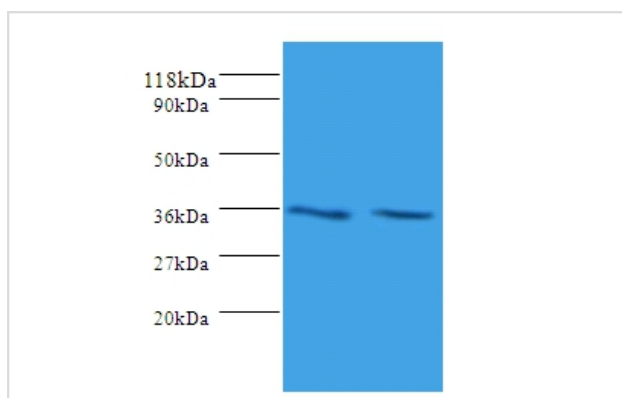
Product Name	Sorting nexin-20 Polyclonal Antibody
Host Species	Rabbit
Clonality	Polyclonal
Purification	Caprylic Acid Ammonium Sulfate Precipitation purified
Applications	WB IHC
Species Reactivity	Hu
Specificity	The antibody detects endogenous level of total Sorting nexin-20 polyclonal antibody.
Immunogen Type	protein
Immunogen Description	Recombinant human Sorting nexin-20 protein
Target Name	Sorting nexin-20
Other Names	Selectin ligand-interactor cytoplasmic 1 SNX20 SLIC1
Accession No.	Swiss-Prot#: Q7Z614
Uniprot	Q7Z614
GeneID	124460;
Calculated MW	36kd
Formulation	Preservative: 0.03% Proclin 300 Constituents: 50% Glycerol, 0.01M PBS, PH 7.4
Storage	Store at -20°C

Application Details

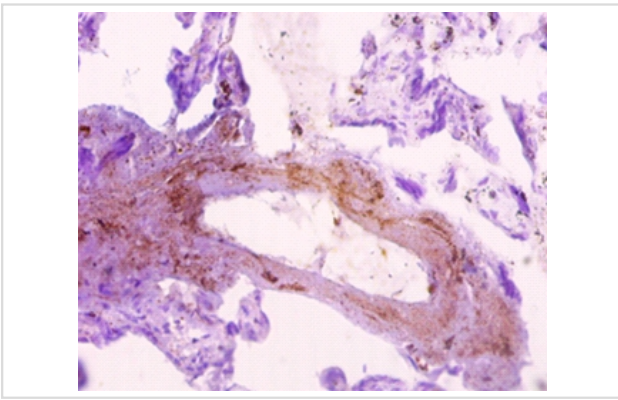
Western blotting: □ 1:500 - 1:1000

Immunohistochemistry: 1:20 - 1:200

Images



All lanes : Sorting nexin-20 at 2ug/ml
 Lane 1 : Mouse spleen tissue
 Lane 2 : Mouse skeletal muscle tissue
 Secondary
 Goat polyclonal to Rabbit IgG at 1/10000 dilution
 Predicted band size:36kDa
 Observed band size:36kDa



Immunohistochemical analysis of paraffin-embedded human placenta using #42329 at dilution of 1:10.

Background

Serves as a sorting protein that cycles P-selectin glycoprotein ligand 1 (PSLG1) into endosomes with no impact on leukocytes recruitment.

References

[1]SLIC-1/sorting nexin 20: a novel sorting nexin that directs subcellular distribution of PSGL-1.Schaff U.Y., Shih H.H., Lorenz M., Sako D., Kriz R., Milarski K., Bates B., Tchernychev B., Shaw G.D., Simon S.I.Eur. J. Immunol. 38:550-564(2008) [2]Compl

Note: This product is for in vitro research use only