

SRGN Polyclonal Antibody

Catalog No: #42330

Orders: order@signalwayantibody.com

Support: tech@signalwayantibody.com

Description

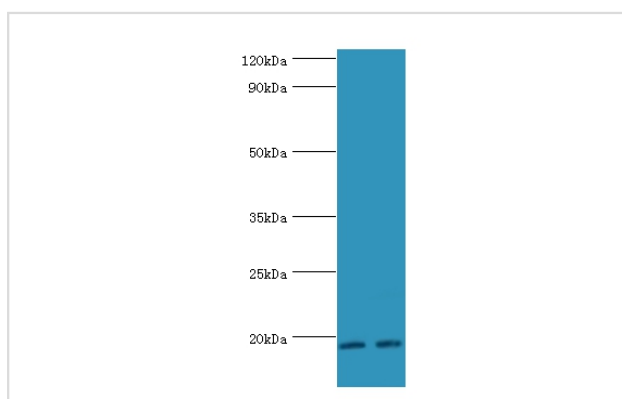
| | |
|-----------------------|---|
| Product Name | SRGN Polyclonal Antibody |
| Host Species | Rabbit |
| Clonality | Polyclonal |
| Purification | Antigen Affinity Purified |
| Applications | WB IHC |
| Species Reactivity | Hu |
| Specificity | The antibody detects endogenous level of total SRGN polyclonal antibody. |
| Immunogen Type | protein |
| Immunogen Description | Recombinant human Serglycin protein(28-158aa) |
| Target Name | SRGN |
| Other Names | Hematopoietic proteoglycan core protein, Platelet proteoglycan core protein, Secretory granule proteoglycan core protein, SRGN, PRG, PRG1 |
| Accession No. | Swiss-Prot#: P10124 |
| Uniprot | P10124 |
| GeneID | 5552; |
| Calculated MW | 18kd |
| Concentration | 1.0mg/mL |
| Formulation | PBS with 0.02% sodium azide, 50% glycerol, pH7.3. |
| Storage | Store at -20°C |

Application Details

Western blotting: □1:500 - 1:2000

Immunohistochemistry: 1:20 - 1:200

Images



All lanes:Serglycin antibody at 9ug/ml

Lane 1:THP-1 whole cell lysate

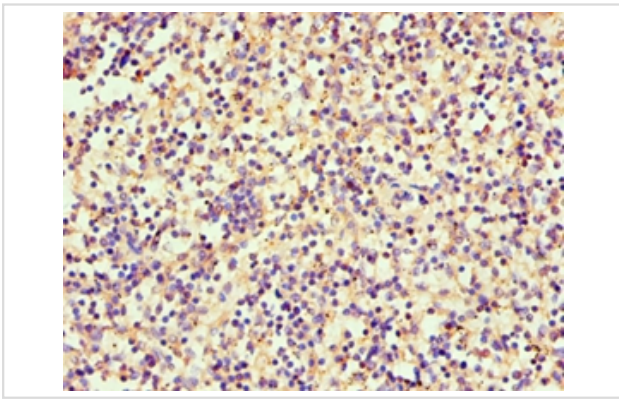
Lane 2:HL-60 whole cell lysate

secondary

Goat polyclonal to rabbit at 1/10000 dilution

predicted band size :18kDa

observed band size :18kDa



Immunohistochemical analysis of paraffin-embedded human spleen using #42330 at dilution of 1:100.

Background

Plays a role in formation of mast cell secretory granules and mediates storage of various compounds in secretory vesicles. Required for storage of some proteases in both connective tissue and mucosal mast cells and for storage of granzyme B in T-lymphocytes. Plays a role in localizing neutrophil elastase in azurophil granules of neutrophils. Mediates processing of MMP2. Plays a role in cytotoxic cell granule-mediated apoptosis by forming a complex with granzyme B which is delivered to cells by perforin to induce apoptosis. Regulates the secretion of TNF-alpha and may also regulate protease secretion. Inhibits bone mineralization.

References

[1]Serglycin constitutively secreted by myeloma plasma cells is a potent inhibitor of bone mineralization in vitro."Theocharis A.D., Seidel C., Borset M., Dobra K., Baykov V., Labropoulou V., Kanakis I., Dalas E., Karamanos N.K., Sundan A., Hjerpe A.J. *Biol. Chem.* 281:35116-35128(2006). [2]Secretion of proteases in serglycin transfected Madin-Darby canine kidney cells."Zernichow L., Dalen K.T., Prydz K., Winberg J.-O., Kolset S.O.*FEBS J.* 273:536-547(2006). [3]Localization of serglycin in human neutrophil granulocytes and their precursors."Niemann C.U., Cowland J.B., Klausen P., Askaa J., Calafat J., Borregaard N.J. *Leukoc. Biol.* 76:406-415(2004).

Note: This product is for in vitro research use only