

SRI Polyclonal Antibody

Catalog No: #42331

Orders: order@signalwayantibody.com

Support: tech@signalwayantibody.com

Description

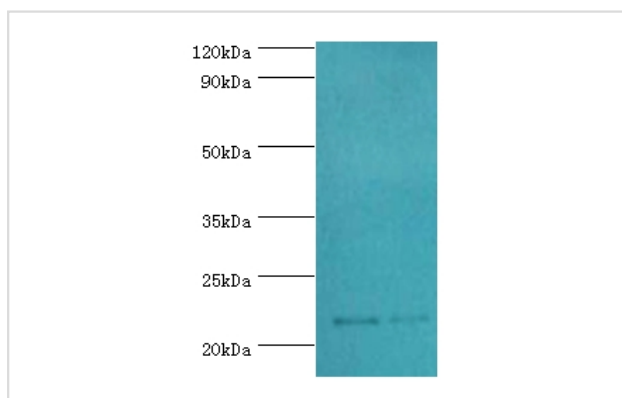
Product Name	SRI Polyclonal Antibody
Host Species	Rabbit
Clonality	Polyclonal
Purification	Antigen Affinity Purified
Applications	WB IHC
Species Reactivity	Hu
Specificity	The antibody detects endogenous level of total SRI polyclonal antibody.
Immunogen Type	protein
Immunogen Description	Recombinant human Sorcin protein(1-198aa)
Target Name	SRI
Other Names	Sorcin, 22 kDa protein, CP-22, CP22, V19, SRI
Accession No.	Swiss-Prot#: P30626
Uniprot	P30626
GeneID	6717;
Calculated MW	22kd
Concentration	1.0mg/mL
Formulation	PBS with 0.02% sodium azide, 50% glycerol, pH7.3.
Storage	Store at -20°C

Application Details

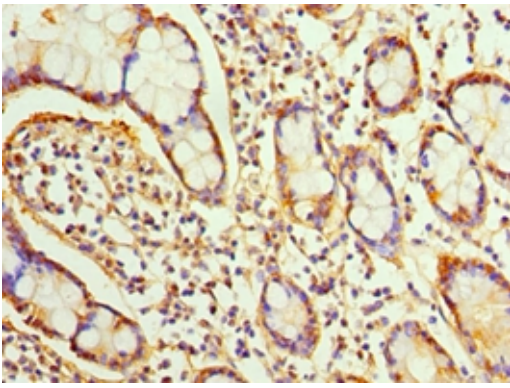
Western blotting: □ 1:500 - 1:1000

Immunohistochemistry: 1:20 - 1:200

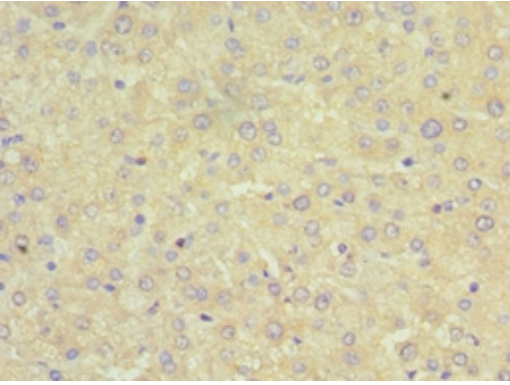
Images



All lanes: Sorcin antibody at 2ug/ml
 Lane 1: mouse liver tissue
 Lane 2: HepG2 whole cell lysate
 secondary
 Goat polyclonal to rabbit at 1/10000 dilution
 predicted band size :22kDa
 observed band size :22kDa



Immunohistochemical analysis of paraffin-embedded human small intestine using #42331 at dilution of 1:100.



Immunohistochemical analysis of paraffin-embedded human liver using #42331 at dilution of 1:100.

Background

Calcium-binding protein that modulates excitation-contraction coupling in the heart. Contributes to calcium homeostasis in the heart sarcoplasmic reticulum. Modulates the activity of RYR2 calcium channels.

References

[1]Molecular basis for the impaired function of the natural F112L sorcin mutant: X-ray crystal structure, calcium affinity, and interaction with annexin VII and the ryanodine receptor."Franceschini S., Ilari A., Verzili D., Zamparelli C., Antaramian A., Rueda A., Valdivia H.H., Chiancone E., Colotti G.FASEB J. 22:295-306(2008). [2]Crystal structure of calcium-free human sorcin: a member of the penta-EF-hand protein family." Xie X., Dwyer M.D., Swenson L., Parker M.H., Botfield M.C.Protein Sci. 10:2419-2425(2001). [3]Initial characterization of the human central proteome."Burkard T.R., Planyavsky M., Kaupé I., Breitwieser F.P., Buerckstuegger T., Bennett K.L., Superti-Furga G., Colinge J.BMC Syst. Biol. 5:17-17(2011).

Note: This product is for in vitro research use only