

Sulfite oxidase,mitochondrial Polyclonal Antibody

Catalog No: #42336

Orders: order@signalwayantibody.com

Support: tech@signalwayantibody.com

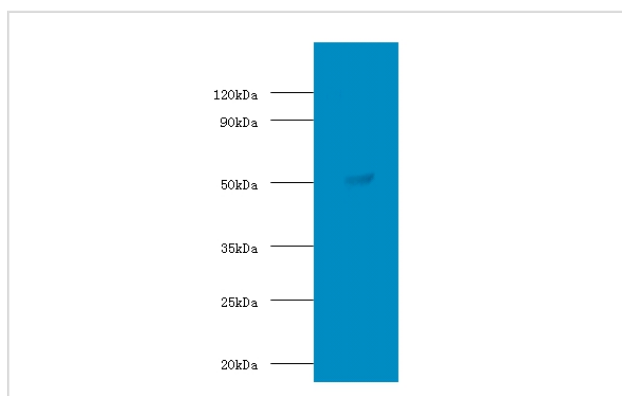
Description

Product Name	Sulfite oxidase,mitochondrial Polyclonal Antibody
Host Species	Rabbit
Clonality	Polyclonal
Purification	Caprylic Acid Ammonium Sulfate Precipitation purified
Applications	WB IHC
Species Reactivity	Hu
Specificity	The antibody detects endogenous level of total Sulfite oxidase,mitochondrial polyclonal antibody.
Immunogen Type	protein
Immunogen Description	Recombinant human Sulfite oxidase, mitochondrial protein
Target Name	Sulfite oxidase,mitochondrial
Other Names	SUOX
Accession No.	Swiss-Prot#: P51687
Uniprot	P51687
GeneID	6821;
Calculated MW	50kd
Formulation	Preservative: 0.03% Proclin 300 Constituents: 50% Glycerol, 0.01M PBS, PH 7.4
Storage	Store at -20°C

Application Details

Western blotting: □ 1:500 - 1:1000

Images



All lanes:Sulfite oxidase, mitochondrial antibody at 2ug/ml+Hela whole cell lysate
 Secondary
 Goat polyclonal to Rabbit IgG at 1/15000 dilution
 Predicted band size:50KDa
 Observed band size:50KDa

Background

Sulfite oxidase is a homodimeric protein localized to the intermembrane space of mitochondria. Each subunit contains a heme domain and a molybdopterin-binding domain. The enzyme catalyzes the oxidation of sulfite to sulfate, the final reaction in the oxidative degradation of the sulfur amino acids cysteine and methionine. Sulfite oxidase deficiency results in neurological abnormalities which are often fatal at an early age. Alternative splicing results in multiple transcript variants encoding identical proteins.

References

[1]"Molecular cloning of human liver sulfite oxidase."Garrett R.M., Bellissimo D.B., Rajagopalan K.V.Biochim. Biophys. Acta 1262:147-149(1995)

[2]"The status, quality, and expansion of the NIH full-length cDNA project: the Mammalian Ge

Note: This product is for in vitro research use only