

Tubulin-specific chaperone C Polyclonal Antibody

Catalog No: #42341

Orders: order@signalwayantibody.com

Support: tech@signalwayantibody.com

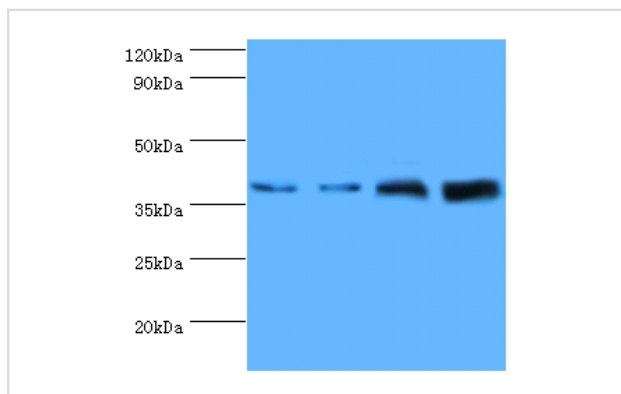
Description

Product Name	Tubulin-specific chaperone C Polyclonal Antibody
Host Species	Rabbit
Clonality	Polyclonal
Purification	Caprylic Acid Ammonium Sulfate Precipitation purified
Applications	WB IHC
Species Reactivity	Hu Ms
Specificity	The antibody detects endogenous level of total Tubulin-specific chaperone C polyclonal antibody.
Immunogen Type	protein
Immunogen Description	Recombinant human Tubulin-specific chaperone C protein
Target Name	Tubulin-specific chaperone C
Other Names	Tubulin-folding cofactor C
Accession No.	Swiss-Prot#: Q15814
Uniprot	Q15814
GeneID	6903;
Calculated MW	39kd
Formulation	Preservative: 0.03% Proclin 300 Constituents: 50% Glycerol, 0.01M PBS, PH 7.4
Storage	Store at -20°C

Application Details

Western blotting: 1:500 - 1:1000

Images



Western blot

All lanes: Tubulin-specific chaperone C antibody at 2ug/ml

Lane 1: mouse brain tissue

Lane 2: HeLa whole cell lysate

Lane 3: NIH3T3 whole cell lysate

Lane 4: A431 whole cell lysate

secondary

Goat polyclonal to rabbit at 1/10000 dilution

predicted band size :39kDa

observed band size :39kDa

Background

Tubulin-folding protein; involved in the final step of the tubulin folding pathway.

References

[1] Pathway leading to correctly folded beta-tubulin. Tian G., Huang Y., Rommelaere H., Vandekerckhove J., Ampe C., Cowan N.J. Cell 86:287-296(1996) [2] Cloning of human full-length CDSs in BD Creator(TM) system donor vector. Kalnine N., Chen X., Rolfs A., Ha

Note: This product is for in vitro research use only