

60S ribosomal protein L3 Polyclonal Antibody

Catalog No: #42347

Orders: order@signalwayantibody.comSupport: tech@signalwayantibody.com

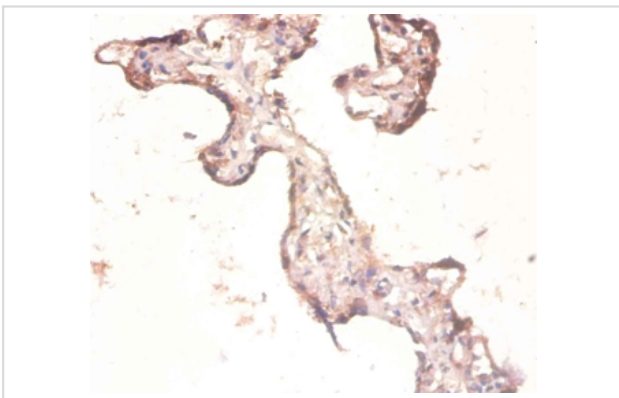
Description

Product Name	60S ribosomal protein L3 Polyclonal Antibody
Host Species	Rabbit
Clonality	Polyclonal
Purification	Caprylic Acid Ammonium Sulfate Precipitation purified
Applications	IHC
Species Reactivity	Hu
Specificity	The antibody detects endogenous level of total 60S ribosomal protein L3 polyclonal antibody.
Immunogen Type	protein
Immunogen Description	Recombinant human 60S ribosomal protein L3 protein
Target Name	60S ribosomal protein L3
Other Names	HIV-1 TAR RNA-binding protein B, RPL3, OK/SW-cl.32
Accession No.	Swiss-Prot#: P39023
Uniprot	P39023
GeneID	6122;
Formulation	Preservative: 0.03% Proclin 300 Constituents: 50% Glycerol, 0.01M PBS, PH 7.4
Storage	Store at -20°C

Application Details

Immunohistochemistry: 1:20 - 1:200

Images



Immunohistochemical analysis of paraffin-embedded human prostate using #42347 at dilution of 1:100.

Background

The L3 protein is a component of the large subunit of cytoplasmic ribosomes.

References

[1] "Complete coding sequence of human ribosomal protein L3 mRNA."Leffers H.Submitted (JUN-1993) [2] "Identification of immuno-peptidmics that are recognized by tumor-reactive CTL generated from TIL of colon cancer patients."Shichijo S., Itoh K.Submitt

Note: This product is for in vitro research use only