

Translationaly-controlled tumor Polyclonal Antibody

Catalog No: #42353

Orders: order@signalwayantibody.comSupport: tech@signalwayantibody.com

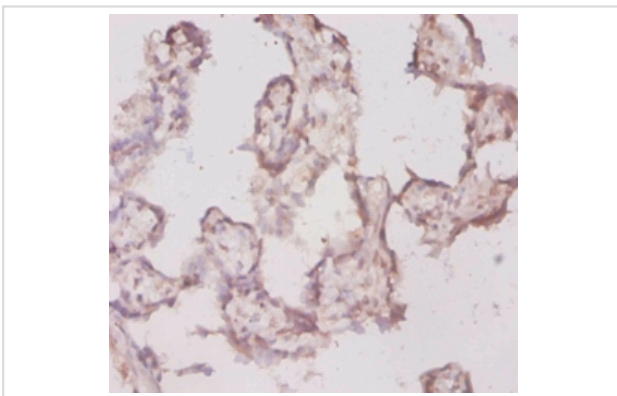
Description

Product Name	Translationaly-controlled tumor Polyclonal Antibody
Host Species	Rabbit
Clonality	Polyclonal
Purification	Caprylic Acid Ammonium Sulfate Precipitation purified
Applications	IHC
Species Reactivity	Ms
Specificity	The antibody detects endogenous level of total Translationaly-controlled tumor polyclonal antibody.
Immunogen Type	protein
Immunogen Description	Recombinant mouse Translationaly-controlled tumor protein
Target Name	Translationaly-controlled tumor
Other Names	21 kDa polypeptide, p21, p23, Tpt1, Trt
Accession No.	Swiss-Prot#: P63028
Uniprot	P63028
GeneID	22070;
Formulation	Preservative: 0.03% Proclin 300 Constituents: 50% Glycerol, 0.01M PBS, PH 7.4
Storage	Store at -20°C

Application Details

Immunohistochemistry: 1:20 - 1:200

Images



Immunohistochemical analysis of paraffin-embedded human placenta using #42353 at dilution of 1:20.

Background

Involved in calcium binding and microtubule stabilization.

References

[1] "Nucleotide sequence of a major messenger RNA for a 21 kilodalton polypeptide that is under translational control in mouse tumor cells." Makrides S., Chitpatima S.T., Bandyopadhyay R., Brawerman G. *Nucleic Acids Res.* 16:2350-2350(1988) [2]

Note: This product is for in vitro research use only