

## 60S ribosomal protein L5 Polyclonal Antibody

Catalog No: #42357

Orders: order@signalwayantibody.com

Support: tech@signalwayantibody.com

## Description

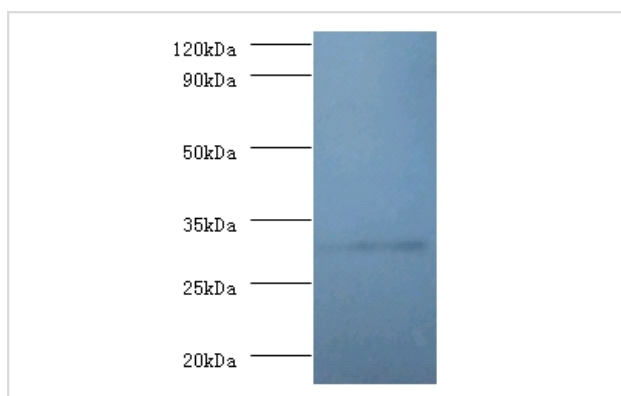
Product Name	60S ribosomal protein L5 Polyclonal Antibody
Host Species	Rabbit
Clonality	Polyclonal
Purification	Caprylic Acid Ammonium Sulfate Precipitation purified
Applications	WB IHC
Species Reactivity	Hu
Specificity	The antibody detects endogenous level of total 60S ribosomal protein L5 polyclonal antibody.
Immunogen Type	protein
Immunogen Description	Recombinant human 60S ribosomal protein L5 protein
Target Name	60S ribosomal protein L5
Other Names	RPL5, MSTP030
Accession No.	Swiss-Prot#: P46777
Uniprot	P46777
GeneID	6125;
Calculated MW	32.7kd
Formulation	Preservative: 0.03% Proclin 300 Constituents: 50% Glycerol, 0.01M PBS, PH 7.4
Storage	Store at -20°C

## Application Details

Western blotting: □ 1:500 - 1:1000

Immunohistochemistry: 1:20 - 1:200

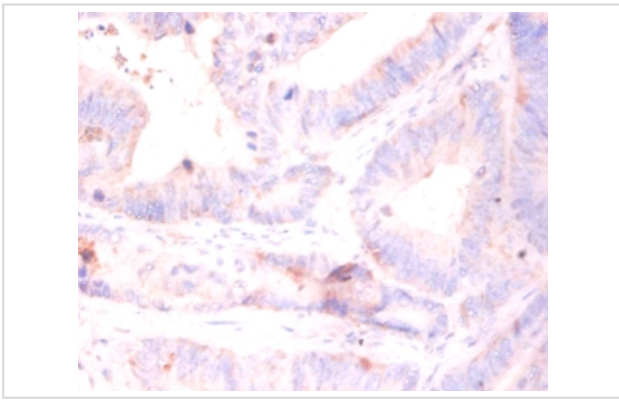
## Images



All lane:60S ribosomal protein L5 polyclonal Antibody at 2ug/ml + EC109 whole cell lysate at 20 ug

Secondary  
Goat polyclonal to Rabbit IgG at 1/15000 dilution

Predicted band size : 32.7 kDa  
Observed band size : 32.7 kDa



Immunohistochemical analysis of paraffin-embedded human colorectal carcinoma using #42357 at dilution of 1:50.

## Background

Required for rRNA maturation and formation of the 60S ribosomal subunits. This protein binds 5S RNA.

## References

[1]"Cloning, sequencing and expression of the L5, L21, L27a, L28, S5, S9, S10 and S29 human ribosomal protein mRNAs."Frigerio J.-M., Dagorn J.-C., Iovanna J.L.Biochim. Biophys. Acta 1262:64-68(1995)

Note: This product is for in vitro research use only