

60S ribosomal protein L17 Polyclonal Antibody

Catalog No: #42358

Orders: order@signalwayantibody.com

Support: tech@signalwayantibody.com

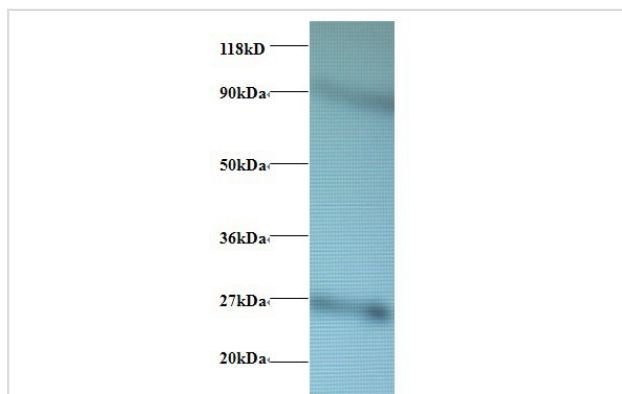
Description

Product Name	60S ribosomal protein L17 Polyclonal Antibody
Host Species	Rabbit
Clonality	Polyclonal
Purification	Caprylic Acid Ammonium Sulfate Precipitation purified
Applications	WB
Species Reactivity	Hu
Specificity	The antibody detects endogenous level of total 60S ribosomal protein L17 polyclonal antibody.
Immunogen Type	protein
Immunogen Description	Recombinant human 60S ribosomal protein L17 protein
Target Name	60S ribosomal protein L17
Other Names	RPL17
Accession No.	Swiss-Prot#: P18621
Uniprot	P18621
GeneID	6139;
Calculated MW	20kd
Formulation	Preservative: 0.03% Proclin 300 Constituents: 50% Glycerol, 0.01M PBS, PH 7.4
Storage	Store at -20°C

Application Details

Western blotting: □1:500 - 1:1000

Images



All lanes : 60S ribosomal protein L17 antibody at at 2ug/ml + EC109whole cell lysate
 SecondaryGoat polyclonal to Rabbit IgG at 1/15000 dilution
 Predicted band size : 20 kDa
 Observed band size : 27 kDa
 Additional bands at : 80kDa.

Background

RPL17 is a ribosomal protein that is a component of the large 60S subunit. The protein belongs to the L22P family of ribosomal proteins.

References

- [1] "A human gene related to the ribosomal protein L23 gene of Halobacterium marismortui." Mager D.L., Freeman J.D. Nucleic Acids Res. 18:5301-5301(1990) [2] "Isolation and characterization of a complementary DNA (PD-1) differentially expressed by human p

Note: This product is for in vitro research use only