

40S ribosomal protein S10 Polyclonal Antibody

Catalog No: #42363

Orders: order@signalwayantibody.com

Support: tech@signalwayantibody.com

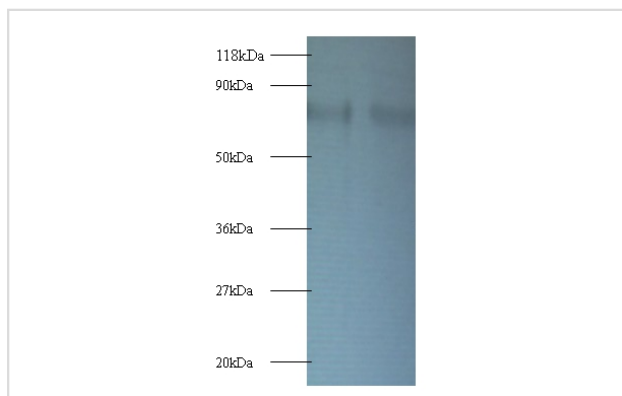
Description

Product Name	40S ribosomal protein S10 Polyclonal Antibody
Host Species	Rabbit
Clonality	Polyclonal
Purification	Caprylic Acid Ammonium Sulfate Precipitation purified
Applications	WB
Species Reactivity	Hu
Specificity	The antibody detects endogenous level of total 40S ribosomal protein S10 polyclonal antibody.
Immunogen Type	protein
Immunogen Description	Recombinant human 40S ribosomal protein S10 protein
Target Name	40S ribosomal protein S10
Other Names	RPS10
Accession No.	Swiss-Prot#: P46783
Uniprot	P46783
GeneID	6204;
Calculated MW	18.1kd
Formulation	Preservative: 0.03% Proclin 300 Constituents: 50% Glycerol, 0.01M PBS, PH 7.4
Storage	Store at -20°C

Application Details

Western blotting: □ 1:500 - 1:1000

Images



All lanes : 40s ribosomal protein S10 Antibody at 2ug/ml
 Lane 1 : EC109 whole cell lysate
 Lane 2 : 293T whole cell lysate
 ?

Secondary Goat polyclonal to Rabbit IgG at 1/15000 dilution
 Predicted band size : 18.1 kDa
 Observed band size : 80 kDa

Background

Component of the 40S ribosomal subunit.

References

[1] "Cloning, sequencing and expression of the L5, L21, L27a, L28, S5, S9, S10 and S29 human ribosomal protein mRNAs."Frigerio J.-M., Dagorn J.-C., Iovanna J.L. *Biochim. Biophys. Acta* 1262:64-68(1995) [2] "Complete sequencing and characterization of 21,2

Note: This product is for in vitro research use only