

Small nuclear ribonucleoprotein Sm D2 Polyclonal Antibody

Catalog No: #42367

Orders: order@signalwayantibody.comSupport: tech@signalwayantibody.com

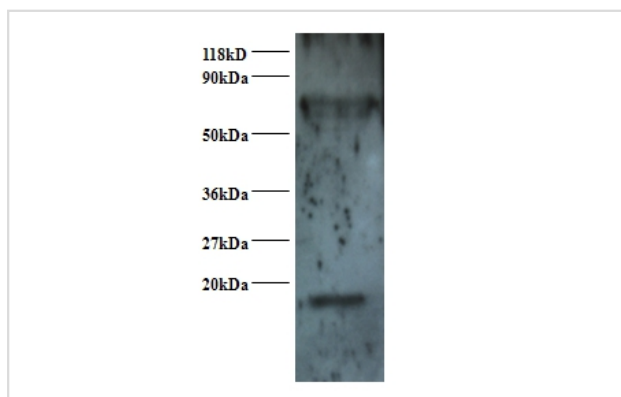
Description

| | |
|-----------------------|---|
| Product Name | Small nuclear ribonucleoprotein Sm D2 Polyclonal Antibody |
| Host Species | Rabbit |
| Clonality | Polyclonal |
| Purification | Caprylic Acid Ammonium Sulfate Precipitation purified |
| Applications | WB |
| Species Reactivity | Hu |
| Specificity | The antibody detects endogenous level of total Small nuclear ribonucleoprotein Sm D2 polyclonal antibody. |
| Immunogen Type | protein |
| Immunogen Description | Recombinant human Small nuclear ribonucleoprotein Sm D2 protein |
| Target Name | Small nuclear ribonucleoprotein Sm D2 |
| Other Names | SNRPD2 |
| Accession No. | Swiss-Prot#: P62316 |
| Uniprot | P62316 |
| GenID | 6633; |
| Calculated MW | 13kd |
| Formulation | Preservative: 0.03% Proclin 300 Constituents: 50% Glycerol, 0.01M PBS, PH 7.4 |
| Storage | Store at -20°C |

Application Details

Western blotting: □1:500 - 1:1000

Images



Small nuclear ribonucleoprotein Sm D2 Antibody at 2ug/ml +
293T whole cell lysate at 20ug
SecondaryGoat polyclonal to Rabbit IgG at 1/15000 dilution
Predicted band size : 13 kDa
Observed band size : 13 kDa
Additional bands at : 80 kDa.

Background

SNRPD2 belongs to the small nuclear ribonucleoprotein core protein family. It is required for pre mRNA splicing and small nuclear ribonucleoprotein biogenesis. Alternative splicing occurs at this locus and two transcript variants encoding the same protein have been identified.

References

[1] "cDNA cloning of the Sm proteins D2 and D3 from human small nuclear ribonucleoproteins: evidence for a direct D1-D2 interaction."Lehmeier T., Raker V., Hermann H., Luehrmann R.Proc. Natl. Acad. Sci. U.S.A. 91:12317-12321(1994) [2] "Complete sequenc

Note: This product is for in vitro research use only