

## Enhancer of rudimentary homolog Polyclonal Antibody

Catalog No: #42373

Orders: [order@signalwayantibody.com](mailto:order@signalwayantibody.com)Support: [tech@signalwayantibody.com](mailto:tech@signalwayantibody.com)

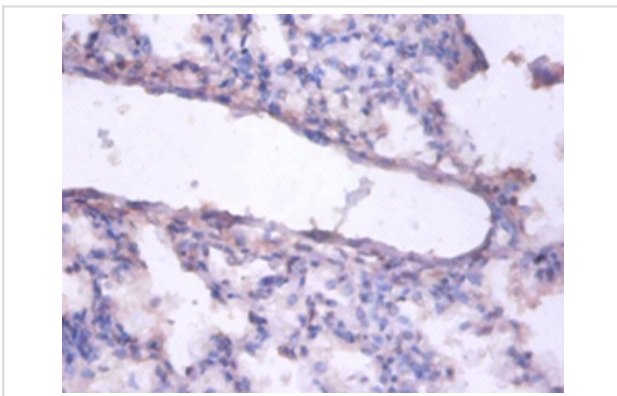
## Description

Product Name	Enhancer of rudimentary homolog Polyclonal Antibody
Host Species	Rabbit
Clonality	Polyclonal
Purification	Caprylic Acid Ammonium Sulfate Precipitation purified
Applications	IHC
Species Reactivity	Hu
Specificity	The antibody detects endogenous level of total Enhancer of rudimentary homolog polyclonal antibody.
Immunogen Type	protein
Immunogen Description	Recombinant human Enhancer of rudimentary homolog protein
Target Name	Enhancer of rudimentary homolog
Other Names	ERH
Accession No.	Swiss-Prot#: P84090
Uniprot	P84090
GeneID	2079;
Formulation	Preservative: 0.03% Proclin 300 Constituents: 50% Glycerol, 0.01M PBS, PH 7.4
Storage	Store at -20°C

## Application Details

Immunohistochemistry: 1:20 - 1:200

## Images



Immunohistochemical analysis of paraffin-embedded human lung tissue using #42373 at dilution of 1:100.

## Background

May have a role in the cell cycle.

## References

---

[1]Cloning and mapping of a novel human cDNA homologous to DROER, the enhancer of the Drosophila melanogaster rudimentary gene.Isomura M., Okui K., Fujiwara T., Shin S., Nakamura Y.Genomics 32:125-127(1996) [2]The putative cell cycle gene, enhancer of

---

Note: This product is for in vitro research use only