

Glucosidase 2 subunit beta Polyclonal Antibody

Catalog No: #42379

Orders: order@signalwayantibody.comSupport: tech@signalwayantibody.com

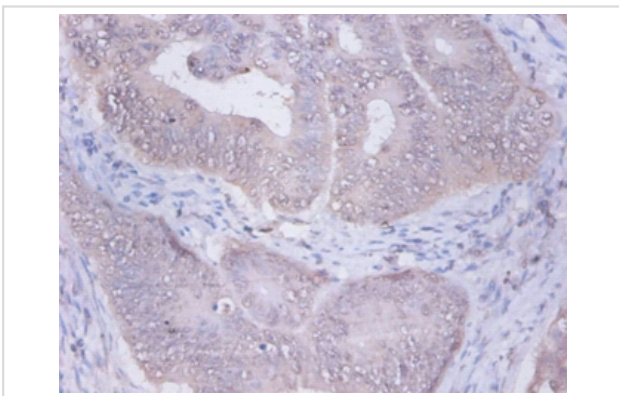
Description

Product Name	Glucosidase 2 subunit beta Polyclonal Antibody
Host Species	Rabbit
Clonality	Polyclonal
Purification	Caprylic Acid Ammonium Sulfate Precipitation purified
Applications	IHC
Species Reactivity	Hu
Specificity	The antibody detects endogenous level of total Glucosidase 2 subunit beta polyclonal antibody.
Immunogen Type	protein
Immunogen Description	Recombinant human Glucosidase 2 subunit beta protein
Target Name	Glucosidase 2 subunit beta
Other Names	PRKCSH
Accession No.	Swiss-Prot#: P14314
Uniprot	P14314
GeneID	5589;
Formulation	Preservative: 0.03% Proclin 300 Constituents: 50% Glycerol, 0.01M PBS, PH 7.4
Storage	Store at -20°C

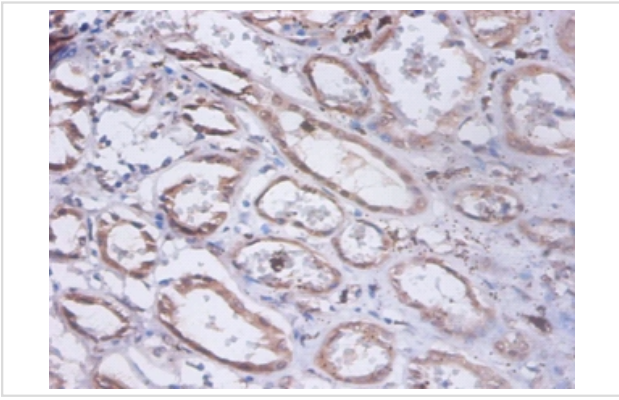
Application Details

Immunohistochemistry: 1:20 - 1:200

Images



Immunohistochemical analysis of paraffin-embedded human colorectal carcinoma using #42379 at dilution of 1:100.



Immunohistochemical analysis of paraffin-embedded human stomach using #42379 at dilution of 1:100.

Background

Regulatory subunit of glucosidase II.

References

[1] "Isolation of cDNAs encoding a substrate for protein kinase C: nucleotide sequence and chromosomal mapping of the gene for a human 80K protein." Sakai K., Masamichi H., Minoshima S., Kudoh J., Fukuyama R., Shimizu N. *Genomics* 5:309-315(1989) [2] "A

Note: This product is for in vitro research use only