

Pyruvate kinase PKM Polyclonal Antibody

Catalog No: #42380

Orders: order@signalwayantibody.com

Support: tech@signalwayantibody.com

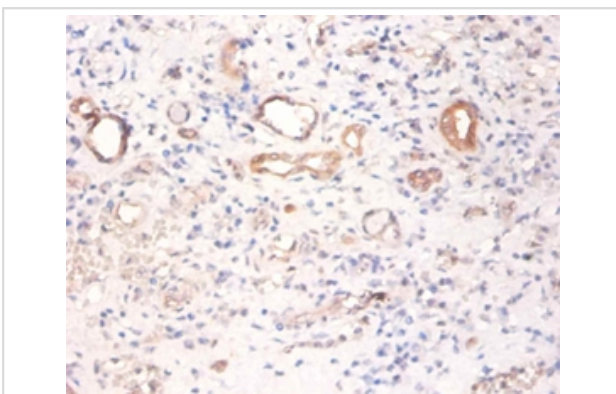
Description

Product Name	Pyruvate kinase PKM Polyclonal Antibody
Host Species	Rabbit
Clonality	Polyclonal
Purification	Caprylic Acid Ammonium Sulfate Precipitation purified
Applications	IHC
Species Reactivity	Hu
Specificity	The antibody detects endogenous level of total Pyruvate kinase PKM polyclonal antibody.
Immunogen Type	protein
Immunogen Description	Recombinant human Pyruvate kinase PKM protein
Target Name	Pyruvate kinase PKM
Other Names	Cytosolic thyroid hormone-binding protein, CTHBP, Opa-interacting protein 3, OIP-3, Pyruvate kinase 2/3, Pyruvate kinase muscle isozyme, Thyroid hormone-binding protein 1, THBP1, Tumor M2-PK, p58, PKM, OIP3, PK2, PK3, PKM2
Accession No.	Swiss-Prot#: P14618
Uniprot	P14618
GeneID	5315;
Formulation	Preservative: 0.03% Proclin 300 Constituents: 50% Glycerol, 0.01M PBS, PH 7.4
Storage	Store at -20°C

Application Details

Immunohistochemistry: 1:20 - 1:200

Images



Immunohistochemical analysis of paraffin-embedded human kidney using #42380 at dilution of 1:100.

Background

Glycolytic enzyme that catalyzes the transfer of a phosphoryl group from phosphoenolpyruvate (PEP) to ADP, generating ATP. Stimulates POU5F1-mediated transcriptional activation. Plays a general role in caspase independent cell death of tumor cells. The ratio between the highly

active tetrameric form and nearly inactive dimeric form determines whether glucose carbons are channeled to biosynthetic processes or used for glycolytic ATP production. The transition between the 2 forms contributes to the control of glycolysis and is important for tumor cell proliferation and survival.

References

[1] "Human M2-type pyruvate kinase: cDNA cloning, chromosomal assignment and expression in hepatoma." Tani K., Yoshida M.C., Satoh H., Mitamura K., Noguchi T., Tanaka T., Fujii H., Miwa S. *Gene* 73:509-516(1988) [2] "Cytosolic thyroid h

Note: This product is for in vitro research use only