

NADH dehydrogenase [ubiquinone] 1 alpha subcomplex subunit 2 Polyclonal Antibody

Catalog No: #42381

Orders: order@signalwayantibody.comSupport: tech@signalwayantibody.com

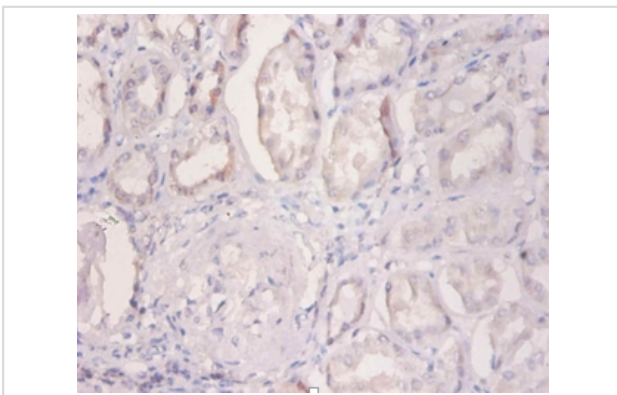
Description

Product Name	NADH dehydrogenase [ubiquinone] 1 alpha subcomplex subunit 2 Polyclonal Antibody
Host Species	Rabbit
Clonality	Polyclonal
Purification	Caprylic Acid Ammonium Sulfate Precipitation purified
Applications	IHC
Species Reactivity	Hu
Specificity	The antibody detects endogenous level of total NADH dehydrogenase [ubiquinone] 1 alpha subcomplex subunit 2 polyclonal antibody.
Immunogen Type	protein
Immunogen Description	Recombinant Human NADH dehydrogenase [ubiquinone] 1 alpha subcomplex subunit 2 protein
Target Name	NADH dehydrogenase [ubiquinone] 1 alpha subcomplex subunit 2
Other Names	Complex I-B8, NADH-ubiquinone oxidoreductase B8 subunit, NDUFA2
Accession No.	Swiss-Prot#: O43678
Uniprot	O43678
GeneID	4695;
Formulation	Preservative: 0.03% Proclin 300 Constituents: 50% Glycerol, 0.01M PBS, PH 7.4
Storage	Store at -20°C

Application Details

Immunohistochemistry: 1:20 - 1:200

Images



Immunohistochemical analysis of paraffin-embedded human kidney using #42381 at dilution of 1:100.

Background

Accessory subunit of the mitochondrial membrane respiratory chain NADH dehydrogenase (Complex I), that is believed not to be involved in catalysis. Complex I functions in the transfer of electrons from NADH to the respiratory chain. The immediate electron acceptor for the enzyme is believed to be

ubiquinone.

References

[1] Identification and primary structure of five human NADH-ubiquinone oxidoreductase subunits. Ton C., Hwang D.M., Dempsey A.A., Liew C.-C. *Biochem. Biophys. Res. Commun.* 241:589-594(1997) [2] Iida A., Kondo K., Kitamoto T., Kitamura Y., Mishima C., Osa

Note: This product is for in vitro research use only