

MALT1 antibody

Catalog No: #22761

Orders: order@signalwayantibody.com

Support: tech@signalwayantibody.com

Description

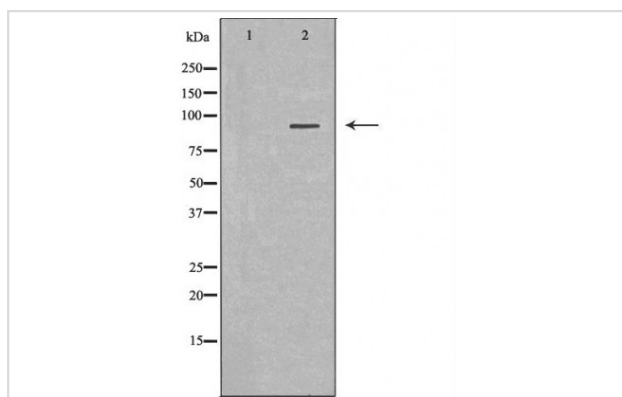
| | |
|-----------------------|--|
| Product Name | MALT1 antibody |
| Host Species | Rabbit |
| Clonality | Polyclonal |
| Purification | Purified by antigen-affinity chromatography. |
| Applications | WB |
| Species Reactivity | Hu Ms Rt |
| Immunogen Description | Recombinant protein of human MALT1 |
| Target Name | MALT1 |
| Accession No. | NCBI Gene ID: 10892NCBI mRNA#: NM_173844NCBI Protein#: NP_776216 |
| Uniprot | Q9UDY8 |
| GeneID | 10892; |
| Concentration | 1mg/ml |
| Formulation | Rabbit IgG in phosphate buffered saline , pH 7.4, 150mM NaCl, 0.02% sodium azide and 50% glycerol. |
| Storage | Store at -20°C for long term preservation (recommended). Store at 4°C for short term use. |

Application Details

Predicted MW: 91kd

Western blotting: 1:500-1:2000

Images



Western blot analysis of extracts of hela cell lines, using MALT1 antibody. The lane on the left is treated with the antigen-specific peptide.

Background

This gene has been found to be recurrently rearranged in chromosomal translocation with two other genes - baculoviral IAP repeat-containing protein 3 (also known as apoptosis inhibitor 2) and immunoglobulin heavy chain locus - in mucosa-associated lymphoid tissue lymphomas. The protein encoded by this gene may play a role in NF-kappaB activation. Two alternatively spliced transcript variants encoding different isoforms have been described for this gene. [provided by RefSeq]

Note: This product is for in vitro research use only