

Exostosin-like 3 Polyclonal Antibody

Catalog No: #42385

Orders: order@signalwayantibody.com

Support: tech@signalwayantibody.com

Description

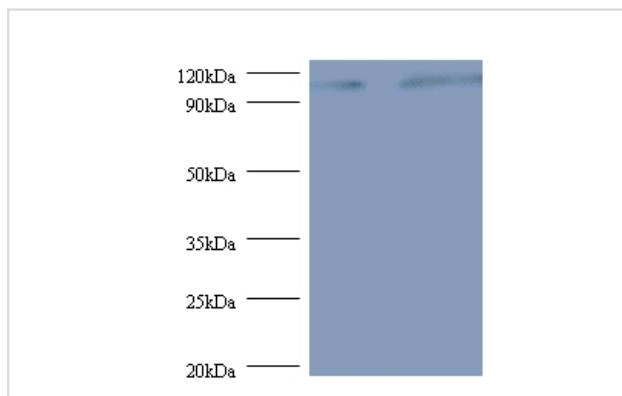
Product Name	Exostosin-like 3 Polyclonal Antibody
Host Species	Rabbit
Clonality	Polyclonal
Purification	Caprylic Acid Ammonium Sulfate Precipitation purified
Applications	WB IHC
Species Reactivity	Hu
Specificity	The antibody detects endogenous level of total Exostosin-like 3 polyclonal antibody.
Immunogen Type	protein
Immunogen Description	Recombinant human Exostosin-like 3 protein
Target Name	Exostosin-like 3
Other Names	EXT-related protein 1 Glucuronyl-galactosyl-proteoglycan 4-alpha-N-acetylglucosaminyltransferase Hereditary multiple exostoses gene isolog Multiple exostosis-like protein 3 Putative tumor suppressor protein EXTL3
Accession No.	Swiss-Prot#: O43909
Uniprot	O43909
GeneID	2137;
Calculated MW	101kd
Formulation	Preservative: 0.03% Proclin 300 Constituents: 50% Glycerol, 0.01M PBS, PH 7.4
Storage	Store at -20°C

Application Details

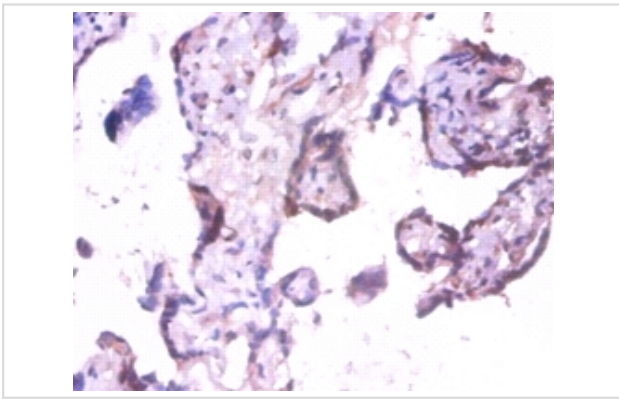
Western blotting: □ 1:500 - 1:1000

Immunohistochemistry: 1:20 - 1:200

Images



All lanes: Exostosin-like 3 antibody at 2ug/ml
 Lane 1: EC109 whole cell lysate
 Lane 2: 293T whole cell lysate
 Secondary
 Goat polyclonal to Rabbit IgG at 1/15000 dilution
 Predicted band size: 101kDa
 Observed band size: 101kDa



Immunohistochemical analysis of paraffin-embedded human placenta using #42385 at dilution of 1:100.

Background

Probable glycosyltransferase.

References

[1]"Identification of a third EXT-like gene (EXTL3) belonging to the EXT gene family."van Hul W., Wuyts W., Hendrickx J., Speleman F., Wauters J., de Boulle K., van Roy N., Bossuyt P., Willems P.J.Genomics 47:230-237(1998) [2] "Struct

Note: This product is for in vitro research use only