

Eukaryotic translation initiation factor 3 subunit I Polyclonal Antibody

Catalog No: #42386

Orders: order@signalwayantibody.com

Support: tech@signalwayantibody.com

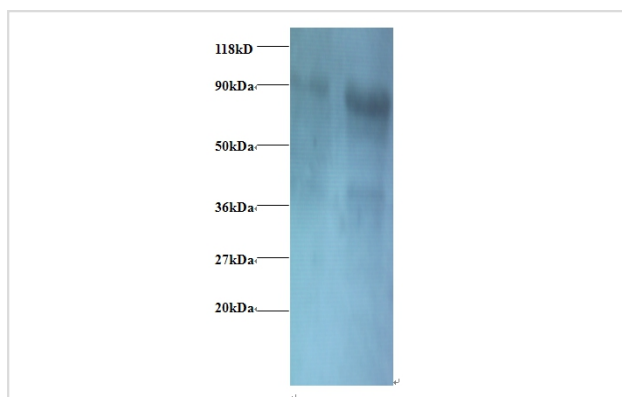
Description

Product Name	Eukaryotic translation initiation factor 3 subunit I Polyclonal Antibody
Host Species	Rabbit
Clonality	Polyclonal
Purification	Caprylic Acid Ammonium Sulfate Precipitation purified
Applications	WB
Species Reactivity	Hu
Specificity	The antibody detects endogenous level of total Eukaryotic translation initiation factor 3 subunit I polyclonal antibody.
Immunogen Type	protein
Immunogen Description	Recombinant human Eukaryotic translation initiation factor 3 subunit I protein
Target Name	Eukaryotic translation initiation factor 3 subunit I
Other Names	EIF3I
Accession No.	Swiss-Prot#: Q13347
Uniprot	Q13347
GeneID	8668;
Calculated MW	36kd
Formulation	Preservative: 0.03% Proclin 300 Constituents: 50% Glycerol, 0.01M PBS, PH 7.4
Storage	Store at -20°C

Application Details

Western blotting: □1:500 - 1:1000

Images



All lanes : Eukaryotic translation initiation factor 3, subunit 2
beta antibody at at 2ug/ml
Lane 1 : EC109whole cell lysate
Lane 2 : 293T whole cell lysate
SecondaryGoat polyclonal to Rabbit IgG at 1/15000 dilution
Predicted band size : 36 kDa
Observed band size : 80 kDa

Background

EIF3S2 is the largest of the EIFs. It consists of at least 10 nonidentical subunits in mammals. In *S. cerevisiae* the p39 subunit contains WD repeats;

these are thought to mediate protein-protein interactions. The p39 protein appears to be essential for maintaining the integrity of the yeast EIF3 complex. The mammalian EIF3-p36 subunit is homologous to yeast p39.

References

[1] "Conservation and diversity of eukaryotic translation initiation factor eIF3." Asano K., Kinzy T.G., Merrick W.C., Hershey J.W.B.J. Biol. Chem. 272:1101-1109(1997) [2] "A WD-domain protein that is associated with and phosphorylated by the type II TG

Note: This product is for in vitro research use only