

Actin-related protein 2/3 complex subunit 3 Polyclonal Antibody

Catalog No: #42389

Orders: order@signalwayantibody.comSupport: tech@signalwayantibody.com

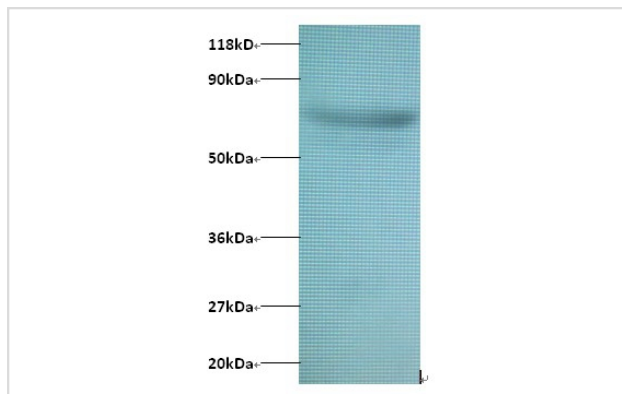
Description

Product Name	Actin-related protein 2/3 complex subunit 3 Polyclonal Antibody
Host Species	Rabbit
Clonality	Polyclonal
Purification	Caprylic Acid Ammonium Sulfate Precipitation purified
Applications	WB
Species Reactivity	Hu
Specificity	The antibody detects endogenous level of total Actin-related protein 2/3 complex subunit 3 polyclonal antibody.
Immunogen Type	protein
Immunogen Description	Recombinant human Actin-related protein 2/3 complex subunit 3 protein
Target Name	Actin-related protein 2/3 complex subunit 3
Other Names	ARPC3
Accession No.	Swiss-Prot#: O15145
Uniprot	O15145
GeneID	10094;
Calculated MW	20kd
Formulation	Preservative: 0.03% Proclin 300 Constituents: 50% Glycerol, 0.01M PBS, PH 7.4
Storage	Store at -20°C

Application Details

Western blotting: □1:500 - 1:1000

Images



Actin-related protein 2/3 complex subunit 3Antibody at 2ug/ml
 + 293T whole cell lysate at 20ug
 SecondaryGoat polyclonal to Rabbit IgG at 1/15000 dilution
 Predicted band size : 20 kDa
 Observed band size : 75 kDa

Background

p21-ARC is part of a complex implicated in the control of actin polymerization in cells. It belongs to a complex composed of ARP2, ARP3, ARPC1,

ARPC2, ARPC3, ARPC4 and ARPC5, collectively known as the ARPC3 family. p21-ARC is implicated as an important regulator of growth cone translocation, especially in the CNS (Strasser et al, 2004).

References

[1] "Mammalian actin-related protein 2/3 complex localizes to regions of lamellipodial protrusion and is composed of evolutionarily conserved proteins." Machesky L.M., Reeves E., Wientjes F., Mattheyse F.J., Grogan A., Totty N.F., Burlingame A.L., Hsuan J.

Note: This product is for in vitro research use only