

# Ras-related GTP-binding protein A Polyclonal Antibody

Catalog No: #42394

Orders: [order@signalwayantibody.com](mailto:order@signalwayantibody.com)Support: [tech@signalwayantibody.com](mailto:tech@signalwayantibody.com)

## Description

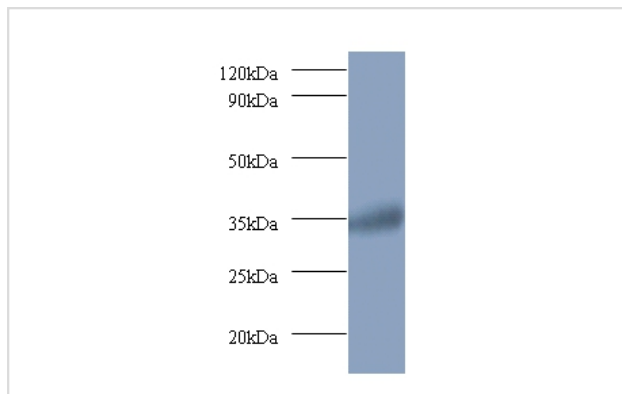
|                       |   |
|-----------------------|---|
| Product Name          | Ras-related GTP-binding protein A Polyclonal Antibody   |
| Host Species          | Rabbit  |
| Clonality             | Polyclonal  |
| Purification          | Caprylic Acid Ammonium Sulfate Precipitation purified   |
| Applications          | WB IHC  |
| Species Reactivity    | Hu  |
| Specificity           | The antibody detects endogenous level of total Ras-related GTP-binding protein A polyclonal antibody. |
| Immunogen Type        | protein   |
| Immunogen Description | Recombinant human Ras-related GTP-binding protein A protein   |
| Target Name           | Ras-related GTP-binding protein A   |
| Other Names           | Adenovirus E3 14.7 kDa-interacting protein 1, RRAGA, FIP-1  |
| Accession No.         | Swiss-Prot#: Q7L523   |
| Uniprot               | Q7L523  |
| GenID                 | 10670;  |
| Calculated MW         | 34kd  |
| Formulation           | Preservative: 0.03% Proclin 300 Constituents: 50% Glycerol, 0.01M PBS, PH 7.4                         |
| Storage               | Store at -20°C  |

## Application Details

Western blotting: □1:500 - 1:1000

Immunohistochemistry: 1:20 - 1:200

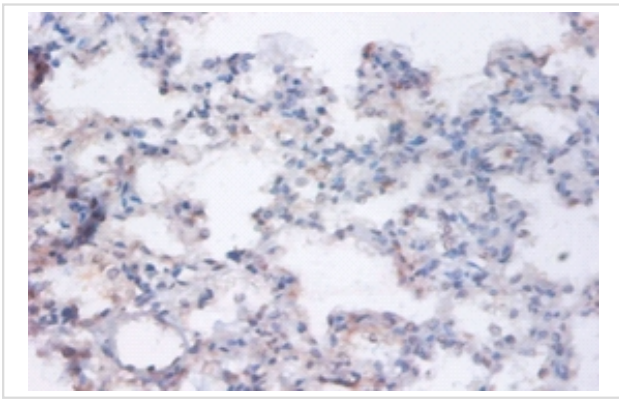
## Images



All lanes : Ras-related GTP-binding protein A antibody at 2ug/ml + 293T whole cell lysate at 20 ug

Secondary  
Goat polyclonal to Rabbit IgG at 1/15000 dilution

Predicted band size : 34kDa  
Observed band size: 34kDa



Immunohistochemical analysis of paraffin-embedded human lungs using #42394 at dilution of 1:100.

## Background

Involved in the RCC1/Ran-GTPase pathway. RRAGA may play a direct role in a TNF-alpha signaling pathway leading to induction of cell death. May alternatively act as a cellular target for adenovirus E3-14.7K, an inhibitor of TNF-alpha functions, thereby affecting cell death. Has guanine nucleotide-binding activity but undetectable intrinsic GTPase activity. biquitously expressed with highest levels of expression in skeletal muscle, heart, and brain.

## References

[1]"Cloning of a novel family of mammalian GTP-binding proteins (RagA, RagBs, RagBI) with remote similarity to the Ras-related GTPases."Schuermann A., Brauers A., Massmann S., Becker W., Joost H.-G.J. Biol. Chem. 270:28982-28988(1995) [2]

Note: This product is for in vitro research use only