

HCLS1-associated protein X-1 Polyclonal Antibody

Catalog No: #42396

Orders: order@signalwayantibody.com

Support: tech@signalwayantibody.com

Description

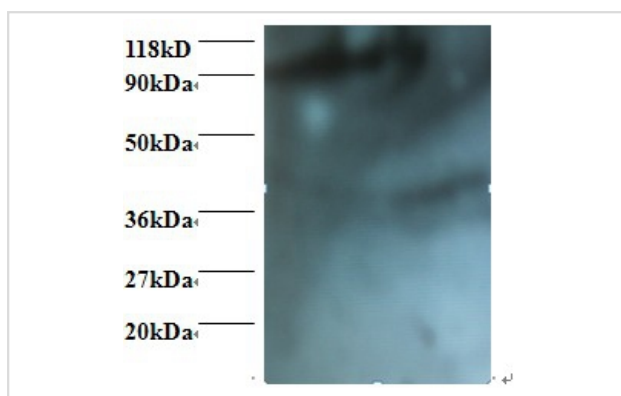
Product Name	HCLS1-associated protein X-1 Polyclonal Antibody
Host Species	Rabbit
Clonality	Polyclonal
Purification	Caprylic Acid Ammonium Sulfate Precipitation purified
Applications	WB IHC
Species Reactivity	Hu
Specificity	The antibody detects endogenous level of total HCLS1-associated protein X-1 polyclonal antibody.
Immunogen Type	protein
Immunogen Description	Recombinant human HCLS1-associated protein X-1 protein
Target Name	HCLS1-associated protein X-1
Other Names	HAX1
Accession No.	Swiss-Prot#: O00165
Uniprot	O00165
GeneID	10456;
Calculated MW	31kd
Formulation	Preservative: 0.03% Proclin 300 Constituents: 50% Glycerol, 0.01M PBS, PH 7.4
Storage	Store at -20°C

Application Details

Western blotting: □1:500 - 1:1000

Immunohistochemistry: 1:20 - 1:200

Images



All lanes : HCLS1-associated protein X-1 antibody at 2ug/ml

Lane 1 : EC109 whole cell lysate

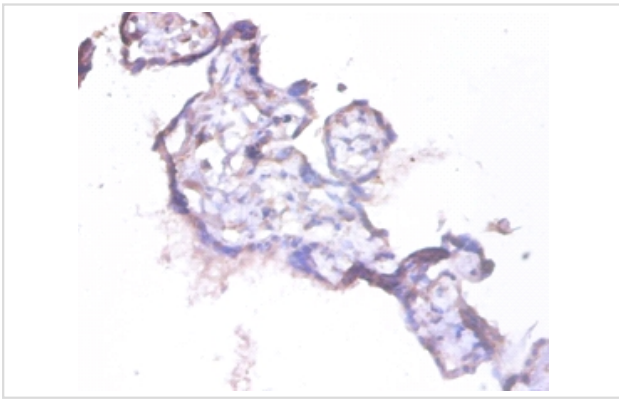
Lane 2 : 293T whole cell lysate

Secondary

Goat polyclonal to Rabbit IgG at 1/15000 dilution

Predicted band size : 31 kDa

Observed band size: 40kDa



Immunohistochemical analysis of paraffin-embedded human placenta using #42396 at dilution of 1:100.

Background

Promotes cell survival. Potentiates GNA13-mediated cell migration. Involved in the clathrin-mediated endocytosis pathway. May be involved in internalization of ABC transporters such as ABCB11. May inhibit CASP9 and CASP3. May regulate intracellular calcium pools.

References

[1] "HAX-1, a novel intracellular protein, localized on mitochondria, directly associates with HS1, a substrate of Src family tyrosine kinases." Suzuki Y., Demoliere C., Kitamura D., Takeshita H., Deuschle U., Watanabe T.J. *Immunol.* 158:2736-2744(1997) [

Note: This product is for in vitro research use only