

Tubulin beta-3 chain Polyclonal Antibody

Catalog No: #42404

Orders: order@signalwayantibody.comSupport: tech@signalwayantibody.com

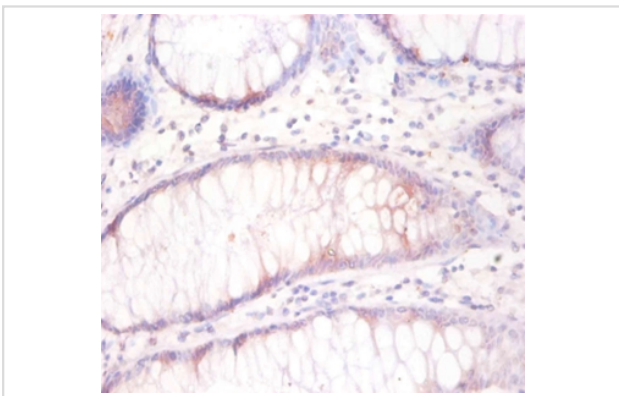
Description

Product Name	Tubulin beta-3 chain Polyclonal Antibody
Host Species	Rabbit
Clonality	Polyclonal
Purification	Caprylic Acid Ammonium Sulfate Precipitation purified
Applications	IHC
Species Reactivity	Hu
Specificity	The antibody detects endogenous level of total Tubulin beta-3 chain polyclonal antibody.
Immunogen Type	protein
Immunogen Description	Recombinant human Tubulin beta-3 chain protein
Target Name	Tubulin beta-3 chain
Other Names	TUBB3
Accession No.	Swiss-Prot#: Q13509
Uniprot	Q13509
GeneID	10381;
Formulation	Preservative: 0.03% Proclin 300 Constituents: 50% Glycerol, 0.01M PBS, PH 7.4
Storage	Store at -20°C

Application Details

Immunohistochemistry: 1:20 - 1:200

Images



Immunohistochemical analysis of paraffin-embedded human colorectal carcinoma using #42404 at dilution of 1:50.

Background

Tubulin is the major constituent of microtubules. It binds two moles of GTP, one at an exchangeable site on the beta chain and one at a non-exchangeable site on the alpha-chain. TUBB3 plays a critical role in proper axon guidance and maintenance.

References

[1] "Cloning and sequencing of human betaIII-tubulin cDNA: induction of betaIII isotype in human prostate carcinoma cells by acute exposure to antimicrotubule agents."Ranganathan S., Dexter D.W., Benetatos C.A., Hudes G.R.Biochim. Biophys. Acta 1395:237-2

Note: This product is for in vitro research use only