

AFG3-like protein 2 Polyclonal Antibody

Catalog No: #42407

Orders: order@signalwayantibody.com

Support: tech@signalwayantibody.com

Description

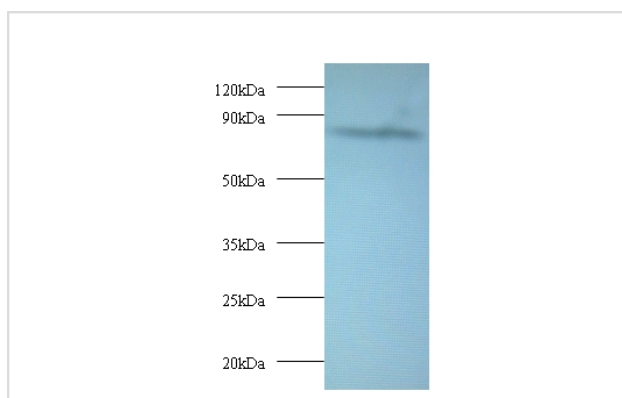
Product Name	AFG3-like protein 2 Polyclonal Antibody
Host Species	Rabbit
Clonality	Polyclonal
Purification	Caprylic Acid Ammonium Sulfate Precipitation purified
Applications	WB IHC
Species Reactivity	Hu
Specificity	The antibody detects endogenous level of total AFG3-like protein 2 polyclonal antibody.
Immunogen Type	protein
Immunogen Description	Recombinant human AFG3-like protein 2 protein
Target Name	AFG3-like protein 2
Other Names	Paraplegin-like protein, AFG3L2
Accession No.	Swiss-Prot#: Q9Y4W6
Uniprot	Q9Y4W6
GeneID	10939;
Calculated MW	87.7kd
Formulation	Preservative: 0.03% Proclin 300 Constituents: 50% Glycerol, 0.01M PBS, PH 7.4
Storage	Store at -20°C

Application Details

Western blotting: □ 1:500 - 1:1000

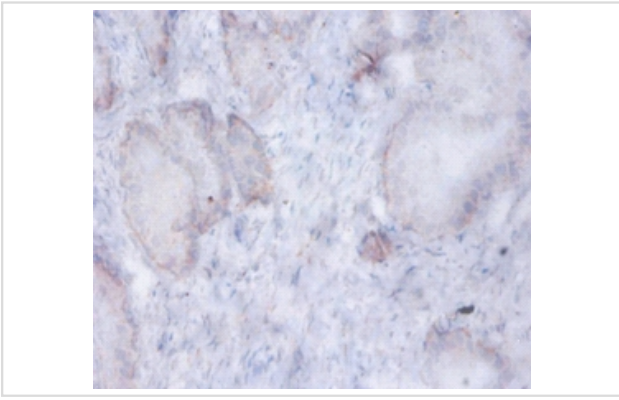
Immunohistochemistry: 1:20 - 1:200

Images



All lanes: AFG3-like protein 2 Antibody at 2ug/ml + EC109
whole cell lysate at 20 ug
Secondary
Goat polyclonal to Rabbit IgG at 1/15000 dilution

Predicted band size : 87.7 kDa
Observed band size : 87.7 kDa



Immunohistochemical analysis of paraffin-embedded human prostate using #42407 at dilution of 1:100.

Background

AFG3L2 is a protein localized in mitochondria and closely related to paraplegin. The paraplegin gene is responsible for an autosomal recessive form of hereditary spastic paraplegia. AFG3L2 is a candidate gene for other hereditary spastic paraplegias or neurodegenerative disorders and is a putative ATP dependent protease.

References

[1] "Identification and characterization of AFG3L2, a novel paraplegin-related gene." Banfi S., Bassi M.T., Andolfi G., Marchitello A., Zanotta S., Ballabio A., Casari G., Franco B. *Genomics* 59:51-58(1999) [2] "The status, quality, and

Note: This product is for in vitro research use only