

Profilin-1 Polyclonal Antibody

Catalog No: #42410

Orders: order@signalwayantibody.com

Support: tech@signalwayantibody.com

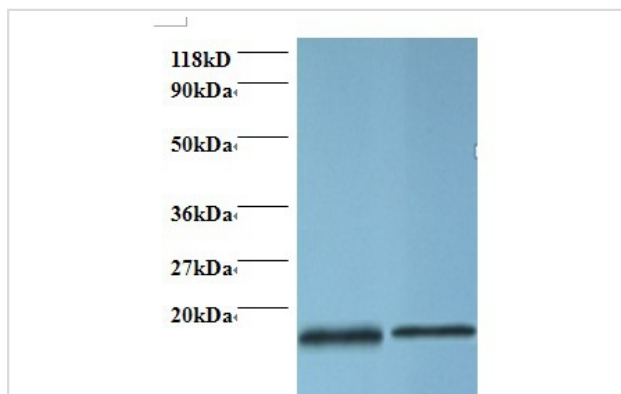
Description

Product Name	Profilin-1 Polyclonal Antibody
Host Species	Rabbit
Clonality	Polyclonal
Purification	Caprylic Acid Ammonium Sulfate Precipitation purified
Applications	WB
Species Reactivity	Hu
Specificity	The antibody detects endogenous level of total Profilin-1 polyclonal antibody.
Immunogen Type	protein
Immunogen Description	Recombinant human Profilin-1 protein
Target Name	Profilin-1
Other Names	PFN1
Accession No.	Swiss-Prot#: P07737
Uniprot	P07737
GeneID	5216;
Calculated MW	15.4kd
Formulation	Preservative: 0.03% Proclin 300 Constituents: 50% Glycerol, 0.01M PBS, PH 7.4
Storage	Store at -20°C

Application Details

Western blotting: □1:500 - 1:1000

Images



All lanes : Profilin-1 antibody at at 2ug/ml
 Lane 1 : EC109 whole cell lysate
 Lane 2 : 293T whole cell lysate
 Secondary Goat polyclonal to Rabbit IgG at 1/15000 dilution
 Predicted band size : 15.4 kDa
 Observed band size: 15.4kDa

Background

Binds to actin and affects the structure of the cytoskeleton. At high concentrations, profilin prevents the polymerization of actin, whereas it enhances it at low concentrations. By binding to PIP2, it inhibits the formation of IP3 and DG.

References

[1] "Human profilin. Molecular cloning, sequence comparison, and chromosomal analysis." Kwiatkowski D.J., Bruns G.A.P. J. Biol. Chem. 263:5910-5915(1988) [PubMed: 3356709] [Abstract] Cited for: NUCLEOTIDE SEQUENCE [MRNA]. [2] "The status, quality,

Note: This product is for in vitro research use only