

## Phosphatidylserine synthase 1 Polyclonal Antibody

Catalog No: #42413

Orders: order@signalwayantibody.com

Support: tech@signalwayantibody.com

## Description

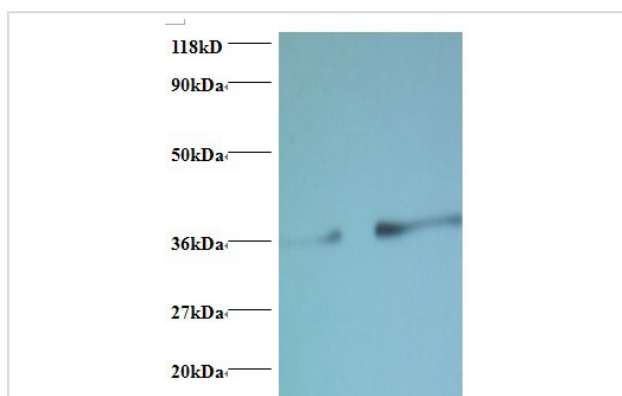
Product Name	Phosphatidylserine synthase 1 Polyclonal Antibody
Host Species	Rabbit
Clonality	Polyclonal
Purification	Caprylic Acid Ammonium Sulfate Precipitation purified
Applications	WB IHC
Species Reactivity	Hu
Specificity	The antibody detects endogenous level of total Phosphatidylserine synthase 1 polyclonal antibody.
Immunogen Type	protein
Immunogen Description	Recombinant human Phosphatidylserine synthase 1 protein
Target Name	Phosphatidylserine synthase 1
Other Names	PTDSS1
Accession No.	Swiss-Prot#: P48651
Uniprot	P48651
GeneID	9791;
Calculated MW	52kd
Formulation	Preservative: 0.03% Proclin 300 Constituents: 50% Glycerol, 0.01M PBS, PH 7.4
Storage	Store at -20°C

## Application Details

Western blotting: □ 1:500 - 1:1000

Immunohistochemistry: 1:20 - 1:200

## Images



All lanes : Phosphatidylserine synthase 1 antibody at 2ug/ml

Lane 1 : EC109 whole cell lysate

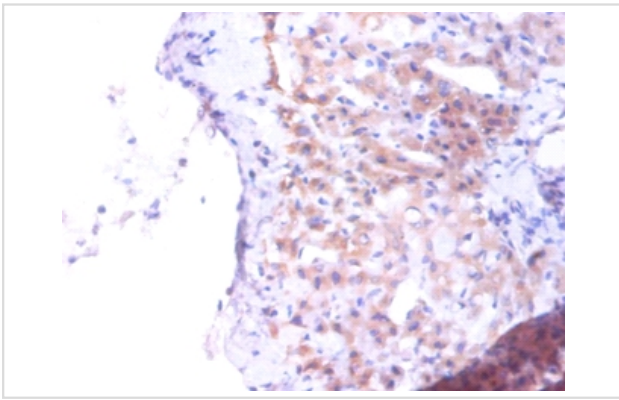
Lane 2 : 293T whole cell lysate

Secondary

Goat polyclonal to Rabbit IgG at 1/15000 dilution

Predicted band size : 52 kDa

Observed band size: 36kDa



Immunohistochemical analysis of paraffin-embedded human liver using #42413 at dilution of 1:100.

## Background

Catalyzes a base-exchange reaction in which the polar head group of phosphatidylcholine is replaced by L-serine

## References

[1] "Prediction of the coding sequences of unidentified human genes. I. The coding sequences of 40 new genes (KIAA0001-KIAA0040) deduced by analysis of randomly sampled cDNA clones from human immature myeloid cell line KG-1." Nomura N., Miyajima N., Sazuka

Note: This product is for in vitro research use only