

## Tax1-binding protein 3 Polyclonal Antibody

Catalog No: #42414

Orders: order@signalwayantibody.com

Support: tech@signalwayantibody.com

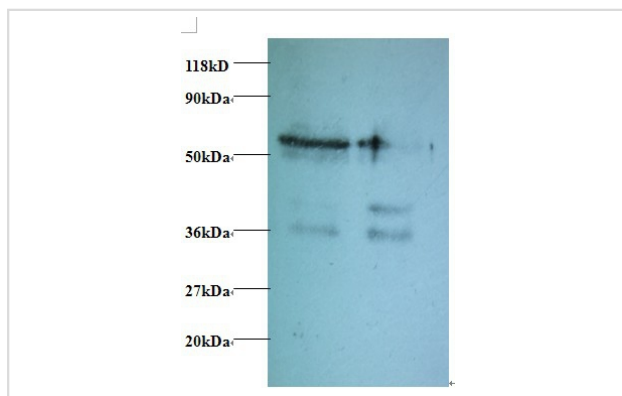
## Description

Product Name	Tax1-binding protein 3 Polyclonal Antibody
Host Species	Rabbit
Clonality	Polyclonal
Purification	Caprylic Acid Ammonium Sulfate Precipitation purified
Applications	WB
Species Reactivity	Hu
Specificity	The antibody detects endogenous level of total Tax1-binding protein 3 polyclonal antibody.
Immunogen Type	protein
Immunogen Description	Recombinant human Tax1-binding protein 3 protein
Target Name	Tax1-binding protein 3
Other Names	TAX1BP3
Accession No.	Swiss-Prot#: O14907
Uniprot	O14907
GeneID	30851;
Calculated MW	13kd
Formulation	Preservative: 0.03% Proclin 300 Constituents: 50% Glycerol, 0.01M PBS, PH 7.4
Storage	Store at -20°C

## Application Details

Western blotting: □ 1:500 - 1:1000

## Images



All lanes : Tax1-binding protein 3 antibody at at 2ug/ml Lane 1 : EC109 whole cell lysate Lane 2 : 293T whole cell lysate

Secondary Goat polyclonal to Rabbit IgG at 1/15000 dilution

Predicted band size : 13kDa

Observed band size: 70 kDa

## Background

May play a role in the Rho signaling pathway. May act as an inhibitor of the Wnt signaling pathway. May play a role in activation of CDC42 by the viral protein HPV16 E6.

## References

---

- [1] "The C-terminus of the HTLV-1 Tax oncoprotein mediates interaction with the PDZ domain of cellular proteins."Rousset R., Fabre S., Desbois C., Bantignies F., Jalinot P.Oncogene 16:643-654(1998) [2] "The genomic region encompassing the nephropathic c

---

Note: This product is for in vitro research use only