

Cytochrome b-c1 complex subunit Rieske, mitochondrial Polyclonal Antibody

Catalog No: #42416

Orders: order@signalwayantibody.comSupport: tech@signalwayantibody.com

Description

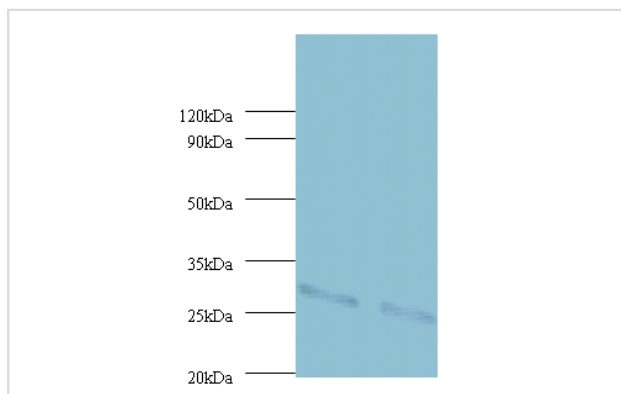
Product Name	Cytochrome b-c1 complex subunit Rieske, mitochondrial Polyclonal Antibody
Host Species	Rabbit
Clonality	Polyclonal
Purification	Caprylic Acid Ammonium Sulfate Precipitation purified
Applications	WB IHC
Species Reactivity	Hu
Specificity	The antibody detects endogenous level of total Cytochrome b-c1 complex subunit Rieske, mitochondrial polyclonal antibody.
Immunogen Type	protein
Immunogen Description	Recombinant human Cytochrome b-c1 complex subunit Rieske, mitochondrial protein
Target Name	Cytochrome b-c1 complex subunit Rieske, mitochondrial
Other Names	UQCRFS1, Complex III subunit 5 Cytochrome b-c1 complex subunit 5 Rieske iron-sulfur protein RISP Ubiquinol-cytochrome c reductase iron-sulfur subunit
Accession No.	Swiss-Prot#: P47985
Uniprot	P47985
GeneID	7386;
Calculated MW	30kd
Formulation	Preservative: 0.03% Proclin 300 Constituents: 50% Glycerol, 0.01M PBS, PH 7.4
Storage	Store at -20°C

Application Details

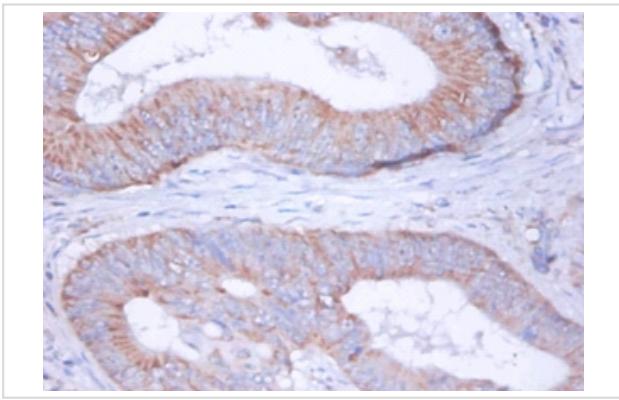
Western blotting: □ 1:500 - 1:1000

Immunohistochemistry: 1:20 - 1:200

Images



All lanes : Phosphatidylserine synthase 1 antibody at 2ug/ml
 Lane 1 : EC109 whole cell lysate
 Lane 2 : 293T whole cell lysate
 Secondary
 Goat polyclonal to Rabbit IgG at 1/15000 dilution
 Predicted band size : 30 kDa
 Observed band size: 30kDa



Immunohistochemical analysis of paraffin-embedded human colorectal carcinoma using #42416 at dilution of 1:100.

Background

Component of the ubiquinol-cytochrome c reductase complex (complex III or cytochrome b-c1 complex), which is a respiratory chain that generates an electrochemical potential coupled to ATP synthesis. The transit peptide of the Rieske protein seems to form part of the bc1 complex and is considered to be the subunit 11/IX of that complex

References

[1] "The primary structure of human Rieske iron-sulfur protein of mitochondrial cytochrome bc1 complex deduced from cDNA analysis." Nishikimi M., Hosokawa Y., Toda H., Suzuki H., Ozawa T. *Biochem. Int.* 20:155-160(1990) [2] "Structure, sequence and locatio

Note: This product is for in vitro research use only