

# 39S ribosomal protein L9, mitochondrial Polyclonal Antibody

Catalog No: #42417

Orders: [order@signalwayantibody.com](mailto:order@signalwayantibody.com)Support: [tech@signalwayantibody.com](mailto:tech@signalwayantibody.com)

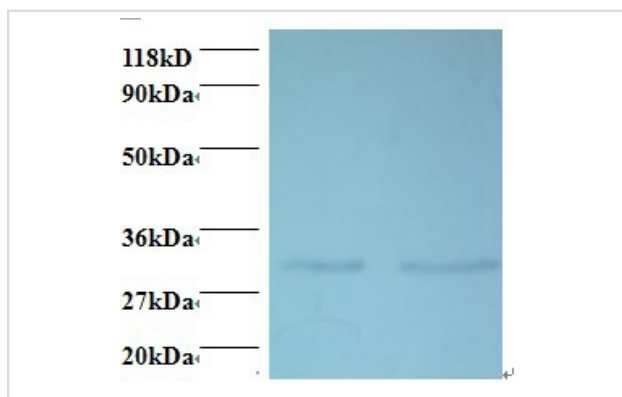
## Description

Product Name	39S ribosomal protein L9, mitochondrial Polyclonal Antibody
Host Species	Rabbit
Clonality	Polyclonal
Purification	Caprylic Acid Ammonium Sulfate Precipitation purified
Applications	WB
Species Reactivity	Hu
Specificity	The antibody detects endogenous level of total 39S ribosomal protein L9, mitochondrial polyclonal antibody.
Immunogen Type	protein
Immunogen Description	Recombinant human 39S ribosomal protein L9, mitochondrial protein
Target Name	39S ribosomal protein L9, mitochondrial
Other Names	MRPL9
Accession No.	Swiss-Prot#: Q9BYD2
Uniprot	Q9BYD2
GenID	65005;
Calculated MW	29.6kd
Formulation	Preservative: 0.03% Proclin 300 Constituents: 50% Glycerol, 0.01M PBS, PH 7.4
Storage	Store at -20°C

## Application Details

Western blotting: □1:500 - 1:1000

## Images



All lanes : 39S ribosomal protein L9, mitochondrial antibody at 2ug/ml  
 Lane 1 : EC109 whole cell lysate  
 Lane 2 : 293T whole cell lysate  
 Secondary  
 Goat polyclonal to Rabbit IgG at 1/15000 dilution

Predicted band size : 29.6 kDa  
 Observed band size: 29.6kDa

## Background

Part of the 50S ribosomal subunit. Contacts L17.

## References

---

[1] "Structural compensation for the deficit of rRNA with proteins in the mammalian mitochondrial ribosome. Systematic analysis of protein components of the large ribosomal subunit from mammalian mitochondria." Suzuki T., Terasaki M., Takemoto-Hori C., H

---

Note: This product is for in vitro research use only