

## Protein canopy homolog 2 Polyclonal Antibody

Catalog No: #42421

Orders: order@signalwayantibody.com

Support: tech@signalwayantibody.com

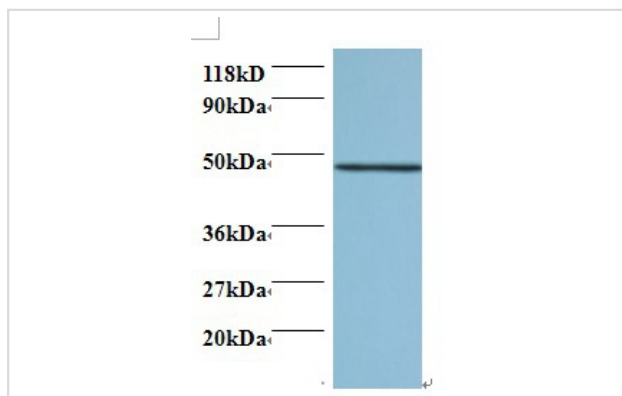
## Description

Product Name	Protein canopy homolog 2 Polyclonal Antibody
Host Species	Rabbit
Clonality	Polyclonal
Purification	Caprylic Acid Ammonium Sulfate Precipitation purified
Applications	WB
Species Reactivity	Hu
Specificity	The antibody detects endogenous level of total Protein canopy homolog 2 polyclonal antibody.
Immunogen Type	protein
Immunogen Description	Recombinant human Protein canopy homolog 2 protein
Target Name	Protein canopy homolog 2
Other Names	MIR-interacting saposin-like protein Putative secreted protein Zsig9 Transmembrane protein 4
Accession No.	Swiss-Prot#: Q9Y2B0
Uniprot	Q9Y2B0
GeneID	10330;
Calculated MW	20kd
Formulation	Preservative: 0.03% Proclin 300 Constituents: 50% Glycerol, 0.01M PBS, PH 7.4
Storage	Store at -20°C

## Application Details

Western blotting: □1:500 - 1:1000

## Images



All lanes : Protein canopy homolog 2 antibody at at  
2ug/ml+293T whole cell lysate  
SecondaryGoat polyclonal to Rabbit IgG at 1/15000 dilution  
Predicted band size : 20 kDa  
Observed band size: 47kDa

## Background

Positive regulator of neurite outgrowth by stabilizing myosin regulatory light chain (MRLC). It prevents MIR-mediated MRLC ubiquitination and its subsequent proteasomal degradation.

## References

---

[1] "Selection of cDNAs encoding putative type II membrane proteins on the cell surface from a human full-length cDNA bank." Yokoyama-Kobayashi M., Yamaguchi T., Sekine S., Kato S. Gene 228:161-167(1999) [PubMed: 10072769] [Abstract] Cited for: NUCLEOT

---

Note: This product is for in vitro research use only