

## Myosin light polypeptide 6 Polyclonal Antibody

Catalog No: #42425

Orders: [order@signalwayantibody.com](mailto:order@signalwayantibody.com)Support: [tech@signalwayantibody.com](mailto:tech@signalwayantibody.com)

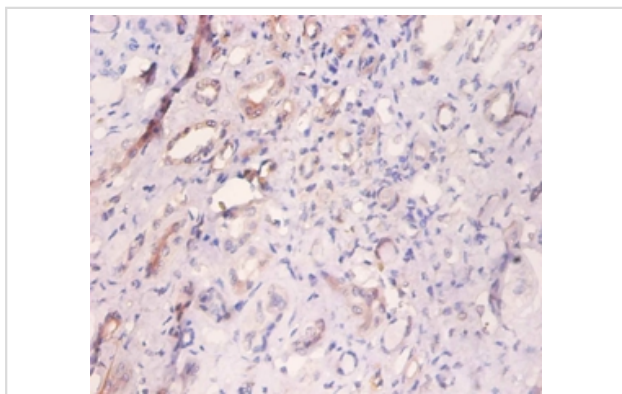
## Description

Product Name	Myosin light polypeptide 6 Polyclonal Antibody
Host Species	Rabbit
Clonality	Polyclonal
Purification	Caprylic Acid Ammonium Sulfate Precipitation purified
Applications	IHC
Species Reactivity	Hu
Specificity	The antibody detects endogenous level of total Myosin light polypeptide 6 polyclonal antibody.
Immunogen Type	protein
Immunogen Description	Recombinant Human Myosin light polypeptide 6 protein
Target Name	Myosin light polypeptide 6
Other Names	17 kDa myosin light chain Myosin light chain 3 Myosin light chain alkali 3 Smooth muscle and nonmuscle myosin light chain alkali 6
Accession No.	Swiss-Prot#: P60660
Uniprot	P60660
GeneID	4637;
Formulation	Preservative: 0.03% Proclin 300 Constituents: 50% Glycerol, 0.01M PBS, PH 7.4
Storage	Store at -20°C

## Application Details

Immunohistochemistry: 1:20 - 1:200

## Images



Immunohistochemical analysis of paraffin-embedded human kidney using #42425 at dilution of 1:100.

## Background

Regulatory light chain of myosin. Does not bind calcium.

## References

---

[1] The alkali light chains of human smooth and nonmuscle myosins are encoded by a single gene. Tissue-specific expression by alternative splicing pathways. Lenz S., Lohse P., Seidel U., Arnold H.H. J. Biol. Chem. 264:9009-9015(1989) [2] Characterizati

---

Note: This product is for in vitro research use only